

COAHUILA

---RED FEDERAL LIBRE---

1 Cd. Acuña - Presa de La Amistad	MEX-002
2 Durango - Torreón	MEX-040
3 Ent. Bella Unión - Saltillo	MEX-057
4 Ent. La Cuchilla - San Pedro de las Colonias	MEX-040
5 Ent. Morelos - Saltillo	MEX-054
6 Gregorio García - Francisco I. Madero	MEX-040
7 Libramiento Allende - Nava	MEX-057
8 Monclova - Piedras Negras	MEX-057
9 Monclova - San Pedro de Las Colonias	MEX-030
10 Monterrey - Castaños	MEX-053
11 Morelos - Cd. Acuña	MEX-029
12 Nueva Rosita - Boquillas del Carmen	MEX-053
13 Nuevo Laredo - Piedras Negras	MEX-002
14 Ojo Caliente - Santa Cruz	MEX-057
15 Piedras Negras - Cd. Acuña	MEX-002
16 Puerto México - La Encantada	MEX-057
17 Saltillo - Monclova	MEX-057
18 Saltillo - Monterrey	MEX-040
19 Saltillo - Torreón	MEX-040
20 Torreón - San Pedro de las Colonias	COA-MEX-030

---RED FEDERAL DE CUOTA---

21 Libramiento Norponiente de Saltillo (Cuota)	MEX-054D
22 Libramiento Norte de Torreón (Cuota)	MEX-040D
23 Libramiento Oriente de Saltillo (Cuota)	MEX-057D
24 Nueva Rosita - Ent. Allende (Cuota)	MEX-057D
25 Puerto México - La Carbonera (Cuota)	MEX-057D
26 Saltillo - Monterrey (Cuota)	MEX-040D
27 Saltillo - Torreón (Cuota) T1	MEX-040D
28 Saltillo - Torreón (Cuota) T2	MEX-040D

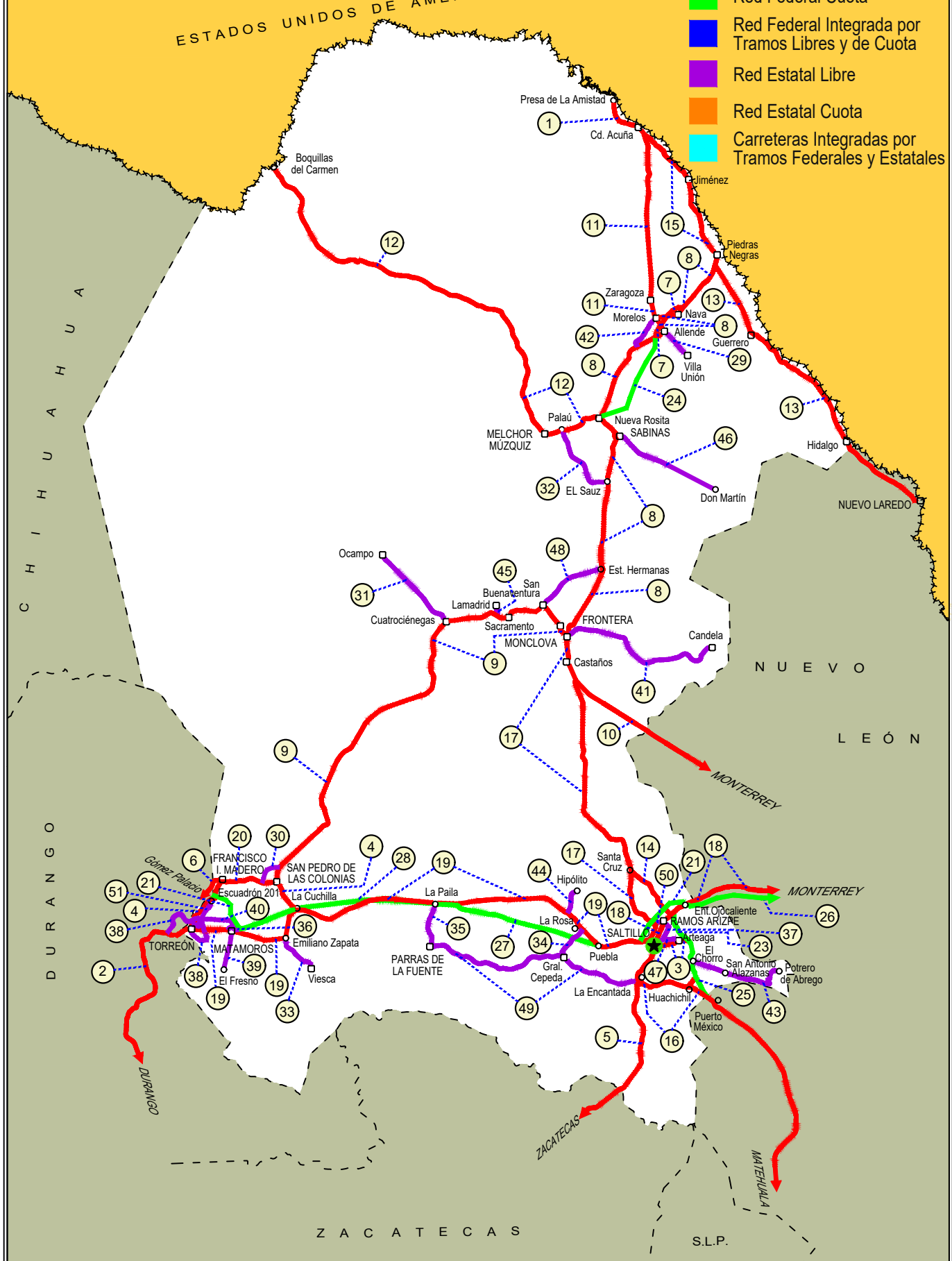
---RED ESTATAL LIBRE---

29 Allende - Villa Unión	COA-015
30 Corredor Libramiento de San Pedro	COA-087
31 Cuatro Ciénegas - Ocampo	COA-048
32 El Sauz - Palau	COA-022
33 Emiliano Zapata - Viesca	COA-082
34 Ent. La Rosa - General Cepeda	COA-034
35 Ent. Paila - Parras de La Fuente	COA-102
36 Libramiento de Matamoros	COA
37 Libramiento de Saltillo J.L.P.	COA
38 Libramiento de Torreón-Gómez Palacio-Lerdo	COA-DGO-MEX-040-049
39 Matamoros - El Fresno	COA-078
40 Matamoros - La Unión	COA-070
41 Monclova - Estación Candela	COA-030-NL
42 Morelos - Ent. Las Corrientes	COA-010
43 Puerto de Flores - El Hondable	COA-112
44 Ramal a Hipólito	COA-114
45 Ramal a Lamadrid	COA-042
46 Sabinas - Don Martín	COA-025
47 Saltillo - Arteaga	COA-106
48 San Buenaventura - Estación Hermanas	COA-034
49 T. C. (Ent. Morelos - Saltillo) - Parras de La Fuente	COA-105
50 T. C. (Saltillo - Monclova) - Ramos Arizpe	COA
51 Torreón - Escuadrón 201	COA-011

05 COAHUILA

ESTADOS UNIDOS DE AMÉRICA

- ① --- Número Índice
- Red Federal Libre
- Red Federal Cuota
- Red Federal Integrada por Tramos Libres y de Cuota
- Red Estatal Libre
- Red Estatal Cuota
- Carreteras Integradas por Tramos Federales y Estatales



ZACATECAS

S.L.P.

COAHUILA

1 CARR: Cd. Acuña - Presa de La Amistad

CLAVE: 05085

RUTA: MEX-002

AÑO: 2025

LUGAR	ESTACION				CLASIFICACION VEHICULAR EN PORCIENTO										COORDENADAS					
	KM	TE	SC	TDPA	M	A	B	C2	C3	T3S2	T3S3	T3S2R4	OTROS	A	B	C	K'	D	LATITUD	LONGITUD
Cd. Acuña	0.00	3	1	15454	1.6	88.2	2.2	5.9	0.5	0.8	0.2	0.3	0.3	89.8	2.2	8.0	0.072	0.621	29.333928	-100.964532
Cd. Acuña	0.00	3	2	15400	1.7	88.5	2.0	5.7	0.5	0.7	0.2	0.4	0.3	90.2	2.0	7.8	0.100	0.621	29.333729	-100.964202
T. Izq. Santa Eulalia	10.60	1	1	6472	2.2	80.1	6.2	8.6	1.1	1.0	0.7	0.1	0.0	82.3	6.2	11.5	0.119	0.646	29.342725	-101.001745
T. Izq. Santa Eulalia	10.60	1	2	5331	2.9	78.5	6.0	8.4	1.5	1.5	1.0	0.2	0.0	81.4	6.0	12.6	0.096	0.646	29.342624	-101.001774
Presa de La Amistad	23.00	1	0	590	2.7	76.8	4.3	13.0	2.9	0.2	0.1	0.0	0.0	79.5	4.3	16.2	0.219	0.845	29.442881	-101.074300

2 CARR: Durango - Torreón

CLAVE: 10085

RUTA: MEX-040

AÑO: 2025

LUGAR	ESTACION				CLASIFICACION VEHICULAR EN PORCIENTO										COORDENADAS					
	KM	TE	SC	TDPA	M	A	B	C2	C3	T3S2	T3S3	T3S2R4	OTROS	A	B	C	K'	D	LATITUD	LONGITUD
Durango	0.00	3	1	10538	5.2	85.3	2.2	4.0	1.1	1.0	0.6	0.5	0.1	90.5	2.2	7.3	0.076	0.561	24.077702	-104.590102
Durango	0.00	3	2	10376	5.0	85.1	2.1	4.2	1.3	1.0	0.6	0.5	0.2	90.1	2.1	7.8	0.073	0.561	24.077459	-104.590500
T. Der. Cd. de Los Niños	7.70	3	1	7706	4.3	86.0	2.3	4.1	1.1	1.5	0.4	0.2	0.1	90.3	2.3	7.4	0.079	0.502	24.082114	-104.586301
T. Der. Cd. de Los Niños	7.70	3	2	7824	4.2	86.1	2.2	4.2	1.1	1.5	0.4	0.2	0.1	90.3	2.2	7.5	0.080	0.502	24.082208	-104.586436
X. Periférico de Durango	9.00	1	1	8599	3.9	86.0	1.9	4.5	2.1	0.9	0.3	0.2	0.2	89.9	1.9	8.2	0.073	0.573	24.088258	-104.581078
X. Periférico de Durango	9.00	1	2	8978	3.9	86.2	2.0	4.4	2.2	0.5	0.4	0.2	0.2	90.1	2.0	7.9	0.075	0.573	24.088499	-104.581044
T. Der. Aeropuerto	9.42	1	1	8731	3.7	85.9	2.1	3.8	1.3	1.8	0.6	0.5	0.3	89.6	2.1	8.3	0.081	0.544	24.092483	-104.577442
T. Der. Aeropuerto	9.42	1	2	9111	3.9	86.6	1.8	3.8	1.3	1.6	0.4	0.3	0.3	90.5	1.8	7.7	0.091	0.544	24.092574	-104.577557
T. Der. Aeropuerto	9.42	3	1	4617	7.5	80.5	2.6	4.1	1.1	2.1	0.9	0.6	0.6	88.0	2.6	9.4	0.089	0.534	24.098609	-104.576102
T. Der. Aeropuerto	9.42	3	2	4519	7.6	80.8	2.7	3.9	1.1	1.9	0.8	0.6	0.6	88.4	2.7	8.9	0.096	0.534	24.098653	-104.576206
La Calera	10.85	3	0	5503	3.7	80.8	3.1	5.9	1.0	3.5	1.5	0.4	0.1	84.5	3.1	12.4	0.084	0.509	24.111254	-104.571811
Abraham González	27.10	3	0	3556	2.1	79.4	2.9	5.1	1.2	5.9	2.6	0.7	0.1	81.5	2.9	15.6	0.075	0.560	24.201452	-104.524741
Francisco I. Madero	56.30	1	0	3546	3.1	76.3	2.9	5.4	1.4	5.9	3.5	1.2	0.3	79.4	2.9	17.7	0.081	0.542	24.391978	-104.331675
Francisco I. Madero	56.30	3	0	3767	2.8	77.6	3.1	5.0	1.5	6.3	2.7	0.9	0.1	80.4	3.1	16.5	0.085	0.506	24.405139	-104.306019
Guadalupe Victoria	77.50	1	0	5492	2.6	78.7	3.6	4.8	1.2	4.7	3.1	1.0	0.3	81.3	3.6	15.1	0.078	0.567	24.446789	-104.139629
Guadalupe Victoria	77.50	3	0	6553	3.6	79.7	2.5	5.8	2.2	3.9	1.1	1.1	0.1	83.3	2.5	14.2	0.080	0.526	24.452919	-104.104094
T. Der. Ignacio Allende	90.13	1	0	4288	2.3	79.3	2.5	2.8	1.3	6.6	4.0	1.1	0.1	81.6	2.5	15.9	0.078	0.547	24.494784	-104.028637
T. Der. Ignacio Allende	90.13	3	0	3118	2.2	73.8	3.5	4.4	1.1	9.6	4.2	1.0	0.2	76.0	3.5	20.5	0.072	0.522	24.507239	-104.010721
T. Izq. Peñón Blanco	120.90	1	0	2450	3.4	64.6	4.1	4.9	2.0	10.7	8.9	1.1	0.3	68.0	4.1	27.9	0.085	0.555	24.733990	-103.842815
T. Izq. Peñón Blanco	120.90	3	0	2120	4.2	63.2	4.1	4.6	1.9	13.3	6.4	2.0	0.3	67.4	4.1	28.5	0.087	0.603	24.742930	-103.837670
Cuencamé	144.30	1	0	1569	6.2	80.5	3.4	3.3	2.2	2.0	2.1	0.2	0.1	86.7	3.4	9.9	0.078	0.610	24.861284	-103.701287
Cuencamé	144.30	3	1	5455	4.1	50.0	4.8	11.3	3.9	15.8	4.8	4.5	0.8	54.1	4.8	41.1	0.095	0.622	24.878145	-103.698960
Cuencamé	144.30	3	2	5367	4.1	50.3	4.7	11.1	4.0	15.8	4.8	4.5	0.7	54.4	4.7	40.9	0.092	0.622	24.878148	-103.699032
T. C. Libramiento Exterior Cuencamé	148.70	1	0	2365	5.2	70.8	3.9	10.8	3.3	2.6	2.2	1.0	0.2	76.0	3.9	20.1	0.079	0.532	24.894245	-103.701866
X. C. Yerbanis - Gómez Palicio (Cuota)	157.80	1	0	8015	1.9	45.0	2.5	7.6	3.3	25.6	6.7	6.4	1.0	46.9	2.5	50.6	0.061	0.523	24.971174	-103.731709

COAHUILA

2 CARR: Durango - Torreón

CLAVE: 10085

RUTA: MEX-040

AÑO: 2025

LUGAR	ESTACION				CLASIFICACION VEHICULAR EN PORCIENTO										COORDENADAS					
	KM	TE	SC	TDPA	M	A	B	C2	C3	T3S2	T3S3	T3S2R4	OTROS	A	B	C	K'	D	LATITUD	LONGITUD
T. Izq. Nazas	171.61	1	0	4066	2.6	58.3	5.6	4.9	4.1	15.4	6.4	2.2	0.5	60.9	5.6	33.5	0.085	0.587	25.086421	-103.771118
T. Izq. Nazas	171.61	3	0	5749	3.0	63.3	3.9	6.0	4.6	10.2	3.6	4.5	0.9	66.3	3.9	29.8	0.071	0.515	25.091766	-103.769785
T. Der. Villa Juárez	194.40	3	0	7472	3.2	60.2	3.0	6.9	4.1	14.5	5.0	2.2	0.9	63.4	3.0	33.6	0.075	0.589	25.226355	-103.627609
León Guzmán	229.58	3	0	10850	7.2	70.6	2.6	5.6	2.1	6.9	2.8	1.7	0.5	77.8	2.6	19.6	0.060	0.509	25.508695	-103.650514
Cd. Lerdo	244.80	1	1	7574	3.6	75.8	3.2	4.6	3.3	5.2	2.0	1.5	0.8	79.4	3.2	17.4	0.078	0.524	25.511913	-103.541966
Cd. Lerdo	244.80	1	2	7803	3.8	76.4	3.0	4.5	3.2	4.5	2.3	1.6	0.7	80.2	3.0	16.8	0.085	0.524	25.512022	-103.541958
T. Izq. Gómez Palacio	248.90	3	1	26072	9.7	84.9	0.6	1.9	0.8	0.6	0.3	0.6	0.6	94.6	0.6	4.8	0.072	0.580	25.550681	-103.480773
T. Izq. Gómez Palacio	248.90	3	2	27139	9.6	84.7	0.7	2.1	1.0	0.6	0.3	0.7	0.3	94.3	0.7	5.0	0.079	0.580	25.550819	-103.480732
Lim. Edos. Term. Dgo. Ppia. Coah.	251.00																			
Torreón	255.80	1	1	20675	6.7	84.9	1.8	4.5	0.3	0.5	0.3	0.8	0.2	91.6	1.8	6.6	0.070	0.501	25.548174	-103.471823
Torreón	255.80	1	2	20104	6.8	84.9	1.7	4.5	0.4	0.5	0.2	0.8	0.2	91.7	1.7	6.6	0.067	0.501	25.548252	-103.471704

3 CARR: Ent. Bella Unión - Saltillo

CLAVE: 05003

RUTA: MEX-057

AÑO: 2025

LUGAR	ESTACION				CLASIFICACION VEHICULAR EN PORCIENTO										COORDENADAS					
	KM	TE	SC	TDPA	M	A	B	C2	C3	T3S2	T3S3	T3S2R4	OTROS	A	B	C	K'	D	LATITUD	LONGITUD
T. C. Ent. Puerto México - Ent. Ojo Caliente (Cuota)	0.00																			
T. Der. Arteaga	4.61	1	1	6153	2.5	83.4	2.1	4.6	1.4	4.2	0.8	0.6	0.4	85.9	2.1	12.0	0.129	0.610	25.444075	-100.834681
T. Der. Arteaga	4.61	1	2	6920	2.6	83.2	2.2	4.8	1.2	4.0	0.9	0.7	0.4	85.8	2.2	12.0	0.119	0.610	25.443970	-100.834754
Saltillo	17.00	1	1	32451	2.2	90.4	1.0	3.3	1.4	1.1	0.2	0.2	0.2	92.6	1.0	6.4	0.079	0.511	25.436617	-100.907250
Saltillo	17.00	1	2	36133	2.1	90.2	1.1	3.4	1.3	1.2	0.3	0.2	0.2	92.3	1.1	6.6	0.068	0.511	25.436487	-100.907324

4 CARR: Ent. La Cuchilla - San Pedro de las Colonias

CLAVE: 05021

RUTA: MEX-040

AÑO: 2025

LUGAR	ESTACION				CLASIFICACION VEHICULAR EN PORCIENTO										COORDENADAS					
	KM	TE	SC	TDPA	M	A	B	C2	C3	T3S2	T3S3	T3S2R4	OTROS	A	B	C	K'	D	LATITUD	LONGITUD
La Cuchilla	0.00	3	0	1345	8.5	76.2	4.6	4.1	1.3	3.3	0.9	1.1	0.0	84.7	4.6	10.7	0.077	0.709	25.626584	-102.882972
T. Der. Mayran	3.30	3	0	1794	9.2	74.6	5.0	5.4	1.5	2.3	0.9	1.0	0.1	83.8	5.0	11.2	0.109	0.564	25.652313	-102.910228
T. Izq. San Patricio	9.07	3	0	2247	9.5	75.3	3.9	5.2	2.7	1.8	0.6	0.9	0.1	84.8	3.9	11.3	0.106	0.540	25.679489	-102.935124
San Pedro de Las Colonias	18.70	1	1	2360	13.1	73.4	3.9	5.1	1.3	1.5	0.9	0.7	0.1	86.5	3.9	9.6	0.109	0.507	25.746236	-102.969108
San Pedro de Las Colonias	18.70	1	2	2223	13.1	74.6	3.8	4.9	0.9	1.2	0.8	0.6	0.1	87.7	3.8	8.5	0.114	0.507	25.746191	-102.969216

COAHUILA

5 CARR: Ent. Morelos - Saltillo

CLAVE: 00149

RUTA: MEX-054

AÑO: 2025

LUGAR	ESTACION				CLASIFICACION VEHICULAR EN PORCIENTO														COORDENADAS	
	KM	TE	SC	TDPA	M	A	B	C2	C3	T3S2	T3S3	T3S2R4	OTROS	A	B	C	K'	D	LATITUD	LONGITUD
T. C. Zacatecas - Durango	0.00	3	1	5000	2.8	67.5	4.4	11.0	2.2	6.7	1.7	2.7	1.0	70.3	4.4	25.3	0.074	0.509	22.868987	-102.619562
T. C. Zacatecas - Durango	0.00	3	2	4816	2.7	67.5	4.4	11.0	2.2	6.7	1.8	2.7	1.0	70.2	4.4	25.4	0.079	0.509	22.869325	-102.619422
T. Der. Sta. Mónica	11.00	1	1	4710	3.1	56.9	4.7	17.6	1.9	11.7	1.5	1.7	0.9	60.0	4.7	35.3	0.067	0.564	22.937463	-102.570189
T. Der. Sta. Mónica	11.00	1	2	5026	3.2	56.1	5.0	17.7	1.9	11.7	1.6	1.8	1.0	59.3	5.0	35.7	0.080	0.564	22.937516	-102.570272
T. Der. Sta. Mónica	11.00	3	1	3648	3.5	46.4	5.5	17.5	4.2	16.6	1.9	3.6	0.8	49.9	5.5	44.6	0.079	0.526	22.950285	-102.559336
T. Der. Sta. Mónica	11.00	3	2	3765	3.8	45.3	5.6	17.7	4.4	16.7	2.1	3.5	0.9	49.1	5.6	45.3	0.072	0.526	22.950542	-102.559220
T. Izq. Villa de Cos	53.90	1	1	4433	2.3	50.9	4.7	19.2	2.5	15.6	1.9	2.3	0.6	53.2	4.7	42.1	0.058	0.519	23.265104	-102.333159
T. Izq. Villa de Cos	53.90	1	2	4648	2.5	50.5	4.5	19.5	2.3	15.6	2.0	2.4	0.7	53.0	4.5	42.5	0.061	0.519	23.265148	-102.333232
T. Izq. Villa de Cos	53.90	3	1	3841	2.4	49.6	5.1	19.6	2.5	15.8	2.0	2.4	0.6	52.0	5.1	42.9	0.073	0.519	23.276418	-102.324984
T. Izq. Villa de Cos	53.90	3	2	3756	2.2	49.7	5.0	19.8	2.5	15.7	2.0	2.5	0.6	51.9	5.0	43.1	0.073	0.519	23.276471	-102.325066
T. Der. Illescas	58.41	3	1	2854	2.5	51.2	5.2	18.9	2.4	15.4	1.8	2.2	0.4	53.7	5.2	41.1	0.066	0.500	23.291397	-102.314125
T. Der. Illescas	58.41	3	2	2823	2.2	50.8	5.0	19.2	2.3	15.6	1.9	2.6	0.4	53.0	5.0	42.0	0.073	0.500	23.291479	-102.314266
Sierra Vieja	85.50	3	1	2647	2.3	46.8	6.6	20.3	2.3	17.2	1.7	2.2	0.6	49.1	6.6	44.3	0.085	0.559	23.505365	-102.121928
Sierra Vieja	85.50	3	2	2582	1.9	47.0	6.4	20.2	2.1	17.4	2.0	2.4	0.6	48.9	6.4	44.7	0.079	0.559	23.505467	-102.122037
T. Der. Majoma	144.50	3	1	2412	1.6	43.0	6.7	22.6	3.6	14.1	2.7	4.9	0.8	44.6	6.7	48.7	0.067	0.505	23.895466	-101.724592
T. Der. Majoma	144.50	3	2	2461	1.6	42.7	6.4	22.7	3.6	14.3	2.9	5.1	0.7	44.3	6.4	49.3	0.069	0.505	23.895532	-101.724736
T. Der. San Tiburcio	185.25	1	1	2149	2.3	43.4	6.5	22.2	3.6	13.6	2.8	5.2	0.4	45.7	6.5	47.8	0.073	0.549	24.155151	-101.497422
T. Der. San Tiburcio	185.25	1	2	2235	2.3	43.0	6.6	22.6	3.3	13.7	2.9	5.2	0.4	45.3	6.6	48.1	0.068	0.549	24.155231	-101.497545
T. Der. San Tiburcio	185.25	3	1	2663	2.3	44.6	6.7	22.0	3.2	13.0	2.8	5.0	0.4	46.9	6.7	46.4	0.079	0.557	24.162695	-101.491982
T. Der. San Tiburcio	185.25	3	2	2508	2.1	42.9	6.9	22.3	3.2	13.6	3.3	5.2	0.5	45.0	6.9	48.1	0.074	0.557	24.162770	-101.492112
T. Izq. Concepción del Oro	240.00	1	1	3967	2.0	47.4	4.8	24.4	3.0	11.9	1.9	3.8	0.8	49.4	4.8	45.8	0.067	0.504	24.611738	-101.369136
T. Izq. Concepción del Oro	240.00	1	2	4280	2.0	48.4	4.8	24.2	2.9	11.3	2.0	3.6	0.8	50.4	4.8	44.8	0.067	0.504	24.611711	-101.369346
T. Izq. Concepción del Oro	240.00	3	1	4091	2.2	56.2	5.0	16.1	2.8	11.9	1.9	3.4	0.5	58.4	5.0	36.6	0.073	0.513	24.647843	-101.349757
T. Izq. Concepción del Oro	240.00	3	2	4274	2.0	56.7	4.9	15.9	2.9	11.5	2.1	3.4	0.6	58.7	4.9	36.4	0.066	0.513	24.647855	-101.349185
Lim. Edos. Term. Zac. Ppia. Coah.	266.50																			
Agua Nueva	322.00	1	0	7484	3.3	56.7	4.8	5.3	2.5	18.3	2.6	5.5	1.0	60.0	4.8	35.2	0.066	0.724	25.179289	-101.094658
T. Der. La Trinidad	333.00	3	1	10945	0.9	81.3	5.4	7.7	1.7	2.6	0.2	0.1	0.1	82.2	5.4	12.4	0.123	0.688	25.283235	-101.087050
T. Der. La Trinidad	333.00	3	2	11082	0.7	81.3	5.2	7.9	1.8	2.4	0.4	0.2	0.1	82.0	5.2	12.8	0.132	0.688	25.283257	-101.087143
X. C. Libramiento de Saltillo	348.00	1	1	23153	1.6	85.4	3.4	5.9	1.2	1.5	0.3	0.4	0.3	87.0	3.4	9.6	0.077	0.602	25.367127	-101.015697
X. C. Libramiento de Saltillo	348.00	1	2	21448	1.5	86.3	3.3	5.7	1.3	1.3	0.2	0.3	0.1	87.8	3.3	8.9	0.060	0.602	25.367233	-101.015848
Saltillo	354.00	1	1	18724	2.4	91.0	1.4	3.8	0.4	0.3	0.2	0.3	0.2	93.4	1.4	5.2	0.069	0.527	25.388259	-101.006041
Saltillo	354.00	1	2	18135	2.5	90.8	1.3	4.0	0.6	0.4	0.1	0.2	0.1	93.3	1.3	5.4	0.074	0.527	25.388293	-101.006127

COAHUILA

6 CARR: Gregorio García - Francisco I. Madero

CLAVE: 00110

RUTA: MEX-040

AÑO: 2025

LUGAR	ESTACION				CLASIFICACION VEHICULAR EN PORCIENTO													COORDENADAS			
	KM	TE	SC	TDPA	M	A	B	C2	C3	T3S2	T3S3	T3S2R4	OTROS	A	B	C	K'	D	LATITUD	LONGITUD	
T. C. Gómez Palacio - Tlahualillo de Zaragoza	0.00																				
Lim. Edos. Term. Dgo. Ppia. Coah.	3.60																				
Francisco I. Madero	9.60	1	0	10413	7.5	82.6	2.5	3.8	1.1	1.5	0.6	0.3	0.1	90.1	2.5	7.4	0.089	0.512	25.772267	-103.297118	

7 CARR: Libramiento Allende - Nava

CLAVE: 05518

RUTA: MEX-057

AÑO: 2025

LUGAR	ESTACION				CLASIFICACION VEHICULAR EN PORCIENTO													COORDENADAS		
	KM	TE	SC	TDPA	M	A	B	C2	C3	T3S2	T3S3	T3S2R4	OTROS	A	B	C	K'	D	LATITUD	LONGITUD
T. C. Monclova - Piedras Negras	0.00	3	1	4659	1.9	72.1	2.8	4.8	1.5	9.3	3.0	3.4	1.2	74.0	2.8	23.2	0.080	0.631	28.328901	-100.885351
T. C. Monclova - Piedras Negras	0.00	3	2	4927	1.8	73.1	2.9	4.2	1.4	9.7	2.3	3.6	1.0	74.9	2.9	22.2	0.093	0.631	28.328925	-100.885422
X. Der. Allende - Izq. Morelos	6.06	3	1	5458	2.4	74.8	3.7	5.6	1.0	7.4	2.0	2.3	0.8	77.2	3.7	19.1	0.073	0.564	28.376772	-100.859407
X. Der. Allende - Izq. Morelos	6.06	3	2	5840	2.0	75.3	3.8	5.7	1.1	6.6	1.9	2.7	0.9	77.3	3.8	18.9	0.091	0.564	28.376823	-100.859458
T. C. Monclova - Piedras Negras	18.55	1	1	5756	1.8	76.1	3.2	4.4	1.5	7.4	2.1	2.9	0.6	77.9	3.2	18.9	0.077	0.633	28.431107	-100.781821
T. C. Monclova - Piedras Negras	18.55	1	2	5928	1.7	77.6	3.1	4.0	1.3	6.8	2.0	2.8	0.7	79.3	3.1	17.6	0.094	0.633	28.431050	-100.782307

8 CARR: Monclova - Piedras Negras

CLAVE: 05407

RUTA: MEX-057

AÑO: 2025

LUGAR	ESTACION				CLASIFICACION VEHICULAR EN PORCIENTO													COORDENADAS		
	KM	TE	SC	TDPA	M	A	B	C2	C3	T3S2	T3S3	T3S2R4	OTROS	A	B	C	K'	D	LATITUD	LONGITUD
Monclova	0.00	3	1	11386	4.9	89.9	1.1	1.7	1.0	0.5	0.2	0.5	0.2	94.8	1.1	4.1	0.063	0.566	26.955621	-101.411039
Monclova	0.00	3	2	12099	5.1	89.6	0.9	1.6	1.2	0.7	0.3	0.4	0.2	94.7	0.9	4.4	0.077	0.566	26.955656	-101.411186
T. Der. Libramiento de Monclova	10.80	1	1	5831	6.2	74.2	3.3	3.2	1.6	6.9	1.3	2.7	0.6	80.4	3.3	16.3	0.067	0.531	26.968228	-101.382657
T. Der. Libramiento de Monclova	10.80	1	2	5927	6.3	73.8	3.5	3.0	1.7	7.2	1.3	2.7	0.5	80.1	3.5	16.4	0.073	0.531	26.968300	-101.382774
T. Der. Libramiento de Monclova	10.80	3	1	5856	2.8	70.9	3.8	9.5	1.6	5.6	1.8	2.8	1.2	73.7	3.8	22.5	0.061	0.527	26.980584	-101.374020
T. Der. Libramiento de Monclova	10.80	3	2	5479	2.5	71.6	3.5	9.7	1.6	5.0	2.0	3.3	0.8	74.1	3.5	22.4	0.063	0.527	26.980627	-101.374151
X. C. San Buenaventura - Estación Hermanas	43.00	1	1	3939	3.6	65.3	4.9	5.6	1.6	11.4	1.7	4.8	1.1	68.9	4.9	26.2	0.091	0.545	27.213516	-101.228525
X. C. San Buenaventura - Estación Hermanas	43.00	1	2	4236	3.9	63.7	5.0	6.1	1.7	11.4	1.9	5.1	1.2	67.6	5.0	27.4	0.077	0.545	27.213566	-101.228674
T. Der. Progreso	61.50	1	1	4676	5.1	69.5	4.0	4.3	1.7	9.5	1.7	3.2	1.0	74.6	4.0	21.4	0.089	0.522	27.386020	-101.215206
T. Der. Progreso	61.50	1	2	4388	4.9	69.6	4.0	4.6	1.6	9.4	1.7	3.1	1.1	74.5	4.0	21.5	0.080	0.522	27.386053	-101.215360
T. Izq. Palau	88.50	1	1	4355	1.8	68.7	4.5	4.4	2.3	11.1	2.5	3.5	1.2	70.5	4.5	25.0	0.075	0.555	27.634731	-101.181964
T. Izq. Palau	88.50	1	2	4277	2.1	69.2	4.1	4.0	2.6	10.9	2.6	3.6	0.9	71.3	4.1	24.6	0.076	0.555	27.634696	-101.182116
T. Izq. Palau	88.50	3	1	4745	1.9	72.7	3.1	4.3	2.1	9.6	1.9	3.3	1.1	74.6	3.1	22.3	0.070	0.633	27.643549	-101.184477
T. Izq. Palau	88.50	3	2	5674	1.6	74.7	3.4	4.1	1.6	8.9	1.9	3.0	0.8	76.3	3.4	20.3	0.081	0.633	27.643420	-101.184539
T. Der. Sabinas (2º Acceso)	115.00	1	1	7773	2.6	80.2	2.0	4.3	1.9	4.8	1.5	2.0	0.7	82.8	2.0	15.2	0.074	0.511	27.867577	-101.135110
T. Der. Sabinas (2º Acceso)	115.00	1	2	7933	2.7	79.2	2.5	4.6	1.9	5.2	1.3	2.1	0.5	81.9	2.5	15.6	0.076	0.511	27.867506	-101.135255

COAHUILA

8 CARR: Monclova - Piedras Negras

CLAVE: 05407

RUTA: MEX-057

AÑO: 2025

LUGAR	ESTACION				CLASIFICACION VEHICULAR EN PORCIENTO										COORDENADAS					
	KM	TE	SC	TDPA	M	A	B	C2	C3	T3S2	T3S3	T3S2R4	OTROS	A	B	C	K'	D	LATITUD	LONGITUD
Agujita	118.85	1	1	11534	2.8	84.3	2.1	4.0	1.0	3.4	0.8	1.2	0.4	87.1	2.1	10.8	0.072	0.510	27.888125	-101.149549
Agujita	118.85	1	2	11618	2.9	84.3	2.3	3.8	1.0	3.5	0.6	1.4	0.2	87.2	2.3	10.5	0.067	0.510	27.888290	-101.149834
Agujita	118.85	3	0	23615	2.7	81.6	1.7	4.7	2.2	4.1	0.8	1.7	0.5	84.3	1.7	14.0	0.065	0.569	27.903754	-101.167912
T. Izq. Nueva Rosita (1º Acceso)	126.30	3	0	4456	2.6	65.5	2.2	4.4	3.5	13.8	4.3	2.9	0.8	68.1	2.2	29.7	0.072	0.627	27.953900	-101.202145
T. C. Nueva Rosita - Ent. Allende (Cuota)	182.00	1	0	4555	1.5	72.4	2.6	4.7	1.8	13.3	2.7	0.9	0.1	73.9	2.6	23.5	0.073	0.595	28.312202	-100.911023
T. C. Libramiento Allende - Nava	183.45	1	1	5379	4.7	73.5	2.8	4.1	1.6	7.2	2.1	3.4	0.6	78.2	2.8	19.0	0.075	0.643	28.319987	-100.892172
T. C. Libramiento Allende - Nava	183.45	1	2	5318	4.4	73.6	2.8	4.4	2.0	6.7	1.9	3.4	0.8	78.0	2.8	19.2	0.100	0.643	28.319910	-100.892635
Allende	187.20	3	1	5550	1.1	90.7	1.4	3.6	1.5	0.5	0.7	0.5	0.0	91.8	1.4	6.8	0.085	0.503	28.363467	-100.859826
Allende	187.20	3	2	5392	1.1	90.6	1.7	3.6	1.5	0.5	0.5	0.5	0.0	91.7	1.7	6.6	0.080	0.503	28.363424	-100.859915
Nava	206.85	1	1	3144	1.3	90.0	2.1	5.1	0.9	0.5	0.1	0.0	0.0	91.3	2.1	6.6	0.084	0.515	28.421461	-100.785003
Nava	206.85	1	2	3036	1.3	89.5	2.3	5.3	1.0	0.4	0.2	0.0	0.0	90.8	2.3	6.9	0.091	0.515	28.421598	-100.785000
Nava	206.85	3	1	10360	2.3	81.7	2.5	3.2	1.8	4.2	1.1	2.7	0.5	84.0	2.5	13.5	0.076	0.509	28.450586	-100.747114
Nava	206.85	3	2	9542	2.0	81.8	2.7	3.3	1.7	4.2	1.1	2.5	0.7	83.8	2.7	13.5	0.097	0.509	28.449898	-100.747997
T. Der. Guerrero	240.28	1	1	10899	3.8	82.3	2.7	3.9	2.6	3.2	0.5	0.8	0.2	86.1	2.7	11.2	0.084	0.615	28.639970	-100.559526
T. Der. Guerrero	240.28	1	2	10781	3.6	83.1	2.6	3.7	2.2	3.4	0.5	0.7	0.2	86.7	2.6	10.7	0.092	0.615	28.640657	-100.559292
Piedras Negras	248.00																			

9 CARR: Monclova - San Pedro de Las Colonias

CLAVE: 05062

RUTA: MEX-030

AÑO: 2025

LUGAR	ESTACION				CLASIFICACION VEHICULAR EN PORCIENTO										COORDENADAS					
	KM	TE	SC	TDPA	M	A	B	C2	C3	T3S2	T3S3	T3S2R4	OTROS	A	B	C	K'	D	LATITUD	LONGITUD
Monclova	0.00																			
Frontera	2.00	3	1	12363	2.0	90.1	1.5	3.1	1.0	1.2	0.5	0.4	0.2	92.1	1.5	6.4	0.086	0.593	26.960343	-101.462595
Frontera	2.00	3	2	11353	1.8	88.3	2.4	3.7	1.0	1.6	0.6	0.4	0.2	90.1	2.4	7.5	0.086	0.593	26.960083	-101.462528
8 de Enero	11.00	3	1	8377	2.0	89.6	2.4	3.6	0.7	0.5	0.5	0.5	0.2	91.6	2.4	6.0	0.097	0.571	27.006745	-101.499432
8 de Enero	11.00	3	2	7841	2.2	88.4	3.2	3.5	0.7	0.8	0.4	0.6	0.2	90.6	3.2	6.2	0.097	0.571	27.006660	-101.499522
Nadadores	27.00	3	1	2316	2.6	87.4	1.5	3.1	1.0	2.2	0.8	1.2	0.2	90.0	1.5	8.5	0.117	0.572	27.031487	-101.602835
Nadadores	27.00	3	2	2336	2.5	86.7	1.5	3.3	1.3	2.4	0.9	1.2	0.2	89.2	1.5	9.3	0.119	0.572	27.031419	-101.602855
Sacramento	45.27	1	1	1487	2.2	85.0	2.1	3.6	1.3	2.9	1.0	1.6	0.3	87.2	2.1	10.7	0.104	0.675	27.011078	-101.719606
Sacramento	45.27	1	2	1614	2.2	84.7	2.2	3.4	1.4	2.7	1.1	1.9	0.4	86.9	2.2	10.9	0.131	0.675	27.010968	-101.719482
T. Der. La Madrid	51.00	3	1	1592	1.8	83.1	2.6	3.8	2.3	2.6	1.5	1.5	0.8	84.9	2.6	12.5	0.102	0.644	27.023804	-101.808788
T. Der. La Madrid	51.00	3	2	1626	1.5	79.6	2.9	4.2	2.6	3.8	2.3	2.5	0.6	81.1	2.9	16.0	0.149	0.644	27.023736	-101.808840
Cuatro Ciénegas	80.15	3	0	1878	2.0	69.8	5.1	4.8	2.1	9.4	3.0	3.1	0.7	71.8	5.1	23.1	0.129	0.521	26.975144	-102.073262
San Pedro de Las Colonias	267.00	1	1	1170	8.3	71.5	3.3	3.5	2.1	5.6	2.3	2.5	0.9	79.8	3.3	16.9	0.096	0.552	25.777267	-102.979006
San Pedro de Las Colonias	267.00	1	2	1198	8.4	70.9	3.5	3.8	1.9	6.0	2.1	2.5	0.9	79.3	3.5	17.2	0.103	0.552	25.776780	-102.978858

COAHUILA

10 CARR: Monterrey - Castaños

CLAVE: 00128

RUTA: MEX-053

AÑO: 2025

LUGAR	ESTACION				CLASIFICACION VEHICULAR EN PORCIENTO													COORDENADAS		
	KM	TE	SC	TDPA	M	A	B	C2	C3	T3S2	T3S3	T3S2R4	OTROS	A	B	C	K'	D	LATITUD	LONGITUD
T. C. Monterrey - Nuevo Laredo	0.00	3	0	21643	6.1	76.4	1.3	7.1	2.4	3.8	1.3	1.4	0.2	82.5	1.3	16.2	0.084	0.531	25.817413	-100.292099
X. C. Libramiento Noroeste de Monterrey	3.46	3	1	21705	4.0	75.3	1.7	6.8	3.4	5.3	1.2	1.8	0.5	79.3	1.7	19.0	0.077	0.563	25.832560	-100.308504
X. C. Libramiento Noroeste de Monterrey	3.46	3	2	19311	4.1	75.5	2.0	7.0	3.2	5.1	1.3	1.6	0.2	79.6	2.0	18.4	0.074	0.563	25.832728	-100.308875
T. Der. Villa del Carmen	13.80	1	1	8902	2.0	76.7	1.6	6.9	3.1	4.7	2.5	2.0	0.5	78.7	1.6	19.7	0.080	0.524	25.891930	-100.349032
T. Der. Villa del Carmen	13.80	1	2	9049	1.9	77.4	1.5	7.0	3.1	4.5	2.3	1.8	0.5	79.3	1.5	19.2	0.071	0.524	25.891904	-100.349079
T. Izq. Hidalgo	24.78	1	0	15077	3.1	77.1	2.2	7.0	1.9	4.5	1.8	1.9	0.5	80.2	2.2	17.6	0.071	0.596	25.956160	-100.424557
T. Izq. Hidalgo	24.78	3	0	12174	3.7	73.9	2.3	5.8	2.5	5.8	3.2	2.3	0.5	77.6	2.3	20.1	0.070	0.523	25.982537	-100.451818
T. Izq. Mina	34.75	1	0	8814	2.5	72.7	2.3	6.7	2.3	5.7	4.0	3.1	0.7	75.2	2.3	22.5	0.068	0.570	26.000701	-100.516205
T. Izq. Espinazo	91.90	1	0	4009	1.6	63.7	2.9	5.2	2.5	14.1	4.9	4.1	1.0	65.3	2.9	31.8	0.080	0.602	26.360301	-100.874788
T. Izq. Espinazo	91.90	3	0	3956	1.8	62.5	3.0	5.5	2.5	14.3	5.1	4.3	1.0	64.3	3.0	32.7	0.078	0.570	26.365326	-100.883194
Lim. Edos. Term. N. L. Ppia. Coah.	115.90																			
T. C. Saltillo - Monclova	155.90	1	1	2310	2.0	61.0	4.4	5.3	3.1	12.3	6.4	4.5	1.0	63.0	4.4	32.6	0.085	0.597	26.692074	-101.382690
T. C. Saltillo - Monclova	155.90	1	2	2376	2.2	60.6	4.5	5.1	3.4	12.5	5.9	4.7	1.1	62.8	4.5	32.7	0.088	0.597	26.692235	-101.382893

11 CARR: Morelos - Cd. Acuña

CLAVE: 05029

RUTA: MEX-029

AÑO: 2025

LUGAR	ESTACION				CLASIFICACION VEHICULAR EN PORCIENTO													COORDENADAS		
	KM	TE	SC	TDPA	M	A	B	C2	C3	T3S2	T3S3	T3S2R4	OTROS	A	B	C	K'	D	LATITUD	LONGITUD
Morelos	0.00	3	1	3187	1.6	87.2	2.2	5.0	0.8	2.6	0.3	0.3	0.0	88.8	2.2	9.0	0.086	0.501	28.418240	-100.890624
Morelos	0.00	3	2	3077	1.4	86.5	2.9	4.8	1.0	2.9	0.3	0.2	0.0	87.9	2.9	9.2	0.089	0.501	28.418215	-100.890694
T. Izq. El Remolino	40.10	1	0	2131	1.7	79.4	3.5	5.3	1.7	5.3	1.2	1.8	0.1	81.1	3.5	15.4	0.098	0.611	28.716960	-100.911961
T. Izq. El Remolino	40.10	3	0	1873	1.0	78.6	1.8	5.6	1.9	8.2	1.3	1.5	0.1	79.6	1.8	18.6	0.082	0.582	28.725642	-100.912280
San Carlos	73.84	1	0	2170	1.5	79.5	1.7	6.5	1.5	6.4	1.3	1.5	0.1	81.0	1.7	17.3	0.077	0.631	29.012986	-100.905459
T. Der. Piedras Negras	104.50	3	1	7538	2.9	83.6	3.4	4.7	2.2	2.1	0.5	0.5	0.1	86.5	3.4	10.1	0.085	0.521	29.297276	-100.915282
T. Der. Piedras Negras	104.50	3	2	8092	3.1	82.9	3.7	4.3	2.6	2.3	0.4	0.6	0.1	86.0	3.7	10.3	0.086	0.521	29.297245	-100.915384
Cd. Acuña	109.10	1	1	8035	1.3	91.5	1.6	4.1	0.5	0.4	0.3	0.2	0.1	92.8	1.6	5.6	0.082	0.531	29.303321	-100.921730
Cd. Acuña	109.10	1	2	9065	1.7	90.2	1.9	4.2	0.9	0.5	0.3	0.2	0.1	91.9	1.9	6.2	0.085	0.531	29.303314	-100.921927

12 CARR: Nueva Rosita - Boquillas del Carmen

CLAVE: 05028

RUTA: MEX-053

AÑO: 2025

LUGAR	ESTACION				CLASIFICACION VEHICULAR EN PORCIENTO													COORDENADAS		
	KM	TE	SC	TDPA	M	A	B	C2	C3	T3S2	T3S3	T3S2R4	OTROS	A	B	C	K'	D	LATITUD	LONGITUD
Nueva Rosita	0.00	3	1	5602	4.7	85.6	1.2	3.8	1.6	1.7	0.7	0.6	0.1	90.3	1.2	8.5	0.081	0.534	27.947761	-101.244818
Nueva Rosita	0.00	3	2	5331	4.6	84.8	1.0	4.4	1.8	1.6	0.9	0.8	0.1	89.4	1.0	9.6	0.074	0.534	27.947657	-101.244820
T. Der. Santa María	14.00	3	1	3098	4.1	82.2	2.0	7.0	1.2	1.7	0.9	0.8	0.1	86.3	2.0	11.7	0.079	0.564	27.906967	-101.334389

COAHUILA

12 CARR: Nueva Rosita - Boquillas del Carmen

CLAVE: 05028

RUTA: MEX-053

AÑO: 2025

LUGAR	ESTACION				CLASIFICACION VEHICULAR EN PORCIENTO										COORDENADAS					
	KM	TE	SC	TDPA	M	A	B	C2	C3	T3S2	T3S3	T3S2R4	OTROS	A	B	C	K'	D	LATITUD	LONGITUD
T. Der. Santa María	14.00	3	2	2826	3.9	82.2	2.0	7.2	1.4	1.6	1.0	0.6	0.1	86.1	2.0	11.9	0.069	0.564	27.906873	-101.334353
Palau	25.00	1	1	3792	4.5	84.5	1.5	4.6	2.1	1.5	0.7	0.3	0.3	89.0	1.5	9.5	0.081	0.546	27.887391	-101.411765
Palau	25.00	1	2	3577	4.5	84.4	1.1	5.1	2.0	1.5	0.7	0.5	0.2	88.9	1.1	10.0	0.072	0.546	27.887299	-101.411803
Palau	25.00	3	1	4200	3.1	82.8	2.8	7.8	1.5	1.2	0.2	0.6	0.0	85.9	2.8	11.3	0.075	0.511	27.887754	-101.431050
Palau	25.00	3	2	4148	3.2	82.8	2.9	7.7	1.7	1.0	0.2	0.5	0.0	86.0	2.9	11.1	0.080	0.511	27.887647	-101.430997
Melchor Múzquiz	35.00	3	0	4020	2.6	80.5	1.4	12.6	1.3	1.1	0.3	0.2	0.0	83.1	1.4	15.5	0.076	0.533	27.895651	-101.531966
Boquillas del Carmen	250.00																			

13 CARR: Nuevo Laredo - Piedras Negras

CLAVE: 00503

RUTA: MEX-002

AÑO: 2025

LUGAR	ESTACION				CLASIFICACION VEHICULAR EN PORCIENTO										COORDENADAS					
	KM	TE	SC	TDPA	M	A	B	C2	C3	T3S2	T3S3	T3S2R4	OTROS	A	B	C	K'	D	LATITUD	LONGITUD
Nuevo Laredo	0.00	3	1	11393	2.6	47.4	2.0	5.4	16.3	24.6	0.6	0.8	0.3	50.0	2.0	48.0	0.104	0.583	27.549943	-99.579595
Nuevo Laredo	0.00	3	2	12175	2.4	48.2	2.2	5.2	16.0	24.4	0.5	0.7	0.4	50.6	2.2	47.2	0.095	0.583	27.549949	-99.579757
T. Izq. Libramiento de Nuevo Laredo	13.00	3	1	5181	7.4	44.4	1.6	5.4	13.1	24.7	1.1	1.5	0.8	51.8	1.6	46.6	0.097	0.650	27.572755	-99.603986
T. Izq. Libramiento de Nuevo Laredo	13.00	3	2	5990	7.7	44.2	1.5	5.3	12.9	24.6	1.3	1.5	1.0	51.9	1.5	46.6	0.103	0.650	27.572661	-99.604046
Lim. Edos. Term. N. L. Ppia. Tamps.	32.50																			
T. C. Monclova - Colombia	36.18	1	0	2838	2.1	64.8	1.6	8.5	3.2	15.6	1.8	2.0	0.4	66.9	1.6	31.5	0.097	0.514	27.688676	-99.778445
Lim. Edos. Term. Coah. Ppia. N. L.	46.18																			
Guerrero	127.00	1	0	900	2.9	56.8	3.5	5.8	3.5	17.1	1.1	8.6	0.7	59.7	3.5	36.8	0.100	0.600	28.307335	-100.364177
T. Izq. Villa Unión	131.58	1	0	1093	3.9	54.0	2.6	9.8	3.7	16.4	1.4	7.2	1.0	57.9	2.6	39.5	0.123	0.582	28.332963	-100.388549
T. Izq. Villa Unión	131.58	3	0	1139	2.7	61.6	2.5	5.6	4.2	14.6	0.8	7.1	0.9	64.3	2.5	33.2	0.102	0.612	28.344494	-100.392054
El Saucito	151.10	1	0	1255	1.3	63.4	3.9	6.0	4.4	12.2	0.8	6.8	1.2	64.7	3.9	31.4	0.098	0.642	28.501897	-100.467312
T. C. Monclova - Piedras Negras	169.30	1	1	6151	2.5	84.9	1.5	3.7	4.0	2.4	0.6	0.3	0.1	87.4	1.5	11.1	0.080	0.565	28.639631	-100.551887
T. C. Monclova - Piedras Negras	169.30	1	2	5812	2.5	85.4	1.5	3.8	3.5	2.2	0.6	0.4	0.1	87.9	1.5	10.6	0.070	0.565	28.639572	-100.551995

14 CARR: Ojo Caliente - Santa Cruz

CLAVE: 05007

RUTA: MEX-057

AÑO: 2025

LUGAR	ESTACION				CLASIFICACION VEHICULAR EN PORCIENTO										COORDENADAS					
	KM	TE	SC	TDPA	M	A	B	C2	C3	T3S2	T3S3	T3S2R4	OTROS	A	B	C	K'	D	LATITUD	LONGITUD
T. C. Saltillo - Monterrey	0.00	3	0	8444	5.3	64.3	4.0	5.3	3.0	10.7	3.5	3.1	0.8	69.6	4.0	26.4	0.074	0.524	25.606891	-100.899815
T. C. Saltillo - Monclova	34.00	1	0	5101	3.3	70.5	4.0	5.4	1.1	8.8	2.3	3.8	0.8	73.8	4.0	22.2	0.115	0.572	25.782708	-101.102461

COAHUILA

15 CARR: Piedras Negras - Cd. Acuña

CLAVE: 05061

RUTA: MEX-002

AÑO: 2025

LUGAR	ESTACION				CLASIFICACION VEHICULAR EN PORCIENTO													COORDENADAS		
	KM	TE	SC	TDPA	M	A	B	C2	C3	T3S2	T3S3	T3S2R4	OTROS	A	B	C	K'	D	LATITUD	LONGITUD
Piedras Negras	0.00	3	1	6829	3.5	76.2	2.9	11.6	2.5	1.7	0.9	0.5	0.2	79.7	2.9	17.4	0.086	0.533	28.730898	-100.575232
Piedras Negras	0.00	3	2	6813	3.4	76.2	2.9	11.7	2.5	1.8	0.9	0.4	0.2	79.6	2.9	17.5	0.076	0.533	28.730839	-100.575331
T. C. Morelos - Cd. Acuña	83.30	1	0	4501	1.5	84.9	3.6	4.2	2.4	1.8	0.6	0.9	0.1	86.4	3.6	10.0	0.090	0.502	29.291417	-100.910564

16 CARR: Puerto México - La Encantada

CLAVE: 05002

RUTA: MEX-057

AÑO: 2025

LUGAR	ESTACION				CLASIFICACION VEHICULAR EN PORCIENTO													COORDENADAS		
	KM	TE	SC	TDPA	M	A	B	C2	C3	T3S2	T3S3	T3S2R4	OTROS	A	B	C	K'	D	LATITUD	LONGITUD
T. C. Aut. Puerto México - Ojo Caliente	202.00																			
Lim. Edos. Term. N. L. Ppia. Coah.	206.50																			
T. C. Ramal a Huachichil	213.00	3	0	2839	1.5	64.4	7.0	5.9	2.4	15.5	1.3	1.8	0.2	65.9	7.0	27.1	0.086	0.574	25.230441	-100.825513
T. C. Ent. Morelos - Saltillo	243.00	1	0	3105	3.0	65.3	6.8	5.1	2.5	13.1	1.7	2.2	0.3	68.3	6.8	24.9	0.088	0.558	25.256111	-101.081102

17 CARR: Saltillo - Monclova

CLAVE: 05406

RUTA: MEX-057

AÑO: 2025

LUGAR	ESTACION				CLASIFICACION VEHICULAR EN PORCIENTO													COORDENADAS		
	KM	TE	SC	TDPA	M	A	B	C2	C3	T3S2	T3S3	T3S2R4	OTROS	A	B	C	K'	D	LATITUD	LONGITUD
Saltillo	0.00																			
T. Der. Ramos Arizpe	13.00	1	0	9801	6.5	68.6	3.0	7.0	3.1	7.3	1.2	2.5	0.8	75.1	3.0	21.9	0.070	0.534	25.527580	-101.002965
T. Der. Ramos Arizpe	13.00	3	0	3009	4.3	80.3	1.5	6.2	3.6	2.5	1.1	0.4	0.1	84.6	1.5	13.9	0.093	0.502	25.528921	-101.005199
T. C. Ojo Caliente - Santa Cruz	49.60	1	0	511	1.9	86.6	1.6	6.6	1.0	1.6	0.4	0.3	0.0	88.5	1.6	9.9	0.123	0.556	25.782135	-101.111938
T. C. Ojo Caliente - Santa Cruz	49.60	3	0	5126	2.3	71.5	3.5	4.8	1.0	8.9	2.4	4.7	0.9	73.8	3.5	22.7	0.124	0.678	25.797442	-101.116078
T. Der. Paredón	64.00	1	0	4976	2.0	73.3	3.4	6.1	1.1	7.4	2.5	3.3	0.9	75.3	3.4	21.3	0.120	0.513	25.906608	-101.149668
T. Der. Paredón	64.00	3	0	4172	2.2	71.3	3.6	4.6	1.4	8.4	3.2	4.3	1.0	73.5	3.6	22.9	0.097	0.681	25.920346	-101.157671
T. Izq. Hipólito	78.00	1	0	5610	1.8	72.8	3.4	4.4	1.1	8.8	2.6	4.1	1.0	74.6	3.4	22.0	0.114	0.552	25.962453	-101.250673
T. Izq. Hipólito	78.00	3	0	6652	3.0	73.9	3.6	5.5	1.1	5.8	2.4	3.8	0.9	76.9	3.6	19.5	0.086	0.620	25.982376	-101.273071
T. Der. Monterrey	165.50	1	0	5605	4.2	71.9	3.1	4.4	1.9	6.5	3.0	4.1	0.9	76.1	3.1	20.8	0.088	0.561	26.683286	-101.386602
T. Der. Monterrey	165.50	3	1	5044	3.5	68.0	3.6	4.7	1.7	9.2	4.0	4.3	1.0	71.5	3.6	24.9	0.107	0.623	26.711170	-101.393497
T. Der. Monterrey	165.50	3	2	4732	3.7	68.8	3.9	4.5	1.6	9.0	3.8	4.0	0.7	72.5	3.9	23.6	0.096	0.623	26.711124	-101.393655
T. Izq. Libramiento de Castaños (1º Acceso)	175.20	1	1	8150	2.8	75.5	3.3	3.9	2.1	7.0	2.2	2.5	0.7	78.3	3.3	18.4	0.110	0.600	26.762940	-101.410854
T. Izq. Libramiento de Castaños (1º Acceso)	175.20	1	2	8179	2.6	76.4	3.0	4.3	1.9	6.8	2.1	2.3	0.6	79.0	3.0	18.0	0.112	0.600	26.762910	-101.411003
T. Izq. Libramiento de Castaños (2º Acceso)	177.10	3	1	12107	3.7	78.7	2.9	4.2	2.5	4.1	1.5	2.1	0.3	82.4	2.9	14.7	0.076	0.503	26.805826	-101.420575
T. Izq. Libramiento de Castaños (2º Acceso)	177.10	3	2	12525	3.6	78.7	2.8	4.5	2.4	4.2	1.3	1.9	0.6	82.3	2.8	14.9	0.075	0.503	26.805874	-101.420732
T. Izq. Libramiento Lic. Carlos Salinas De Gortari	184.10	1	1	12458	3.2	80.7	3.0	3.3	2.3	3.8	1.3	2.0	0.4	83.9	3.0	13.1	0.091	0.541	26.828265	-101.421762
T. Izq. Libramiento Lic. Carlos Salinas De Gortari	184.10	1	2	12518	3.4	81.0	2.8	3.2	2.4	3.6	1.1	1.9	0.6	84.4	2.8	12.8	0.076	0.541	26.828075	-101.421889

COAHUILA

17 CARR: Saltillo - Monclova

CLAVE: 05406

RUTA: MEX-057

AÑO: 2025

LUGAR	ESTACION				CLASIFICACION VEHICULAR EN PORCIENTO										COORDENADAS					
	KM	TE	SC	TDPA	M	A	B	C2	C3	T3S2	T3S3	T3S2R4	OTROS	A	B	C	K'	D	LATITUD	LONGITUD
T. Izq. Libramiento Lic. Carlos Salinas De Gortari	184.10	3	1	24816	3.5	90.4	1.3	1.7	0.9	0.6	0.3	1.0	0.3	93.9	1.3	4.8	0.086	0.500	26.863144	-101.427228
T. Izq. Libramiento Lic. Carlos Salinas De Gortari	184.10	3	2	24734	3.7	89.9	1.5	1.6	1.1	0.7	0.4	0.9	0.2	93.6	1.5	4.9	0.081	0.500	26.863172	-101.427380
Monclova	192.00	1	1	26842	3.4	91.6	1.6	1.5	0.5	0.4	0.2	0.5	0.3	95.0	1.6	3.4	0.084	0.507	26.881542	-101.425582
Monclova	192.00	1	2	25659	3.2	92.1	1.7	1.5	0.4	0.3	0.2	0.4	0.2	95.3	1.7	3.0	0.086	0.507	26.881567	-101.425719

18 CARR: Saltillo - Monterrey

CLAVE: 00087

RUTA: MEX-040

AÑO: 2025

LUGAR	ESTACION				CLASIFICACION VEHICULAR EN PORCIENTO										COORDENADAS					
	KM	TE	SC	TDPA	M	A	B	C2	C3	T3S2	T3S3	T3S2R4	OTROS	A	B	C	K'	D	LATITUD	LONGITUD
T. C. Saltillo - Arteaga	0.00																			
T. Izq. Zinacamex	4.25	3	1	55137	1.9	90.8	0.8	3.6	0.9	0.7	0.2	0.9	0.2	92.7	0.8	6.5	0.092	0.634	25.486317	-100.970426
T. Izq. Zinacamex	4.25	3	2	50720	1.9	90.9	0.8	3.5	0.9	0.7	0.2	0.9	0.2	92.8	0.8	6.4	0.077	0.634	25.486769	-100.970395
Ramos Arizpe	11.30	1	1	49032	1.7	86.9	1.4	4.7	1.0	1.8	1.3	0.9	0.3	88.6	1.4	10.0	0.080	0.585	25.515917	-100.957492
Ramos Arizpe	11.30	1	2	50825	1.7	87.4	1.2	4.5	1.0	1.8	1.3	0.9	0.2	89.1	1.2	9.7	0.079	0.585	25.516005	-100.957688
T. Der. Aeropuerto	13.00	3	1	40080	3.5	79.6	2.7	6.9	1.4	4.1	1.2	0.5	0.1	83.1	2.7	14.2	0.114	0.648	25.554130	-100.927980
T. Der. Aeropuerto	13.00	3	2	41170	3.4	79.3	2.7	7.1	1.3	4.1	1.2	0.6	0.3	82.7	2.7	14.6	0.105	0.648	25.554312	-100.928059
T. Der. Libramiento J.L.P.	16.00	3	1	36199	2.9	75.7	2.4	7.6	2.1	7.0	0.8	1.2	0.3	78.6	2.4	19.0	0.118	0.721	25.567992	-100.912259
T. Der. Libramiento J.L.P.	16.00	3	2	35356	2.8	76.0	2.1	7.7	1.8	7.2	0.8	1.2	0.4	78.8	2.1	19.1	0.082	0.721	25.564719	-100.915639
Ojo Caliente	26.30	1	1	21215	3.3	56.0	3.9	5.6	1.9	24.2	2.3	2.4	0.4	59.3	3.9	36.8	0.078	0.576	25.610963	-100.843468
Ojo Caliente	26.30	1	2	21904	3.3	55.9	3.9	5.5	2.1	24.3	2.2	2.2	0.6	59.2	3.9	36.9	0.089	0.576	25.612554	-100.850966
Lim. Edos. Term. Coah. Ppia. N. L.	33.00																			
T. Izq. Libramiento Noroeste de Monterrey	54.00	1	1	17574	2.5	55.5	4.0	7.6	2.4	21.5	2.5	3.6	0.4	58.0	4.0	38.0	0.085	0.532	25.698312	-100.562343
T. Izq. Libramiento Noroeste de Monterrey	54.00	1	2	18746	2.6	54.2	4.0	7.6	2.4	22.7	2.7	3.4	0.4	56.8	4.0	39.2	0.077	0.532	25.698666	-100.562657
T. Der. Santa Catarina (1º Acceso)	62.46	1	1	38616	2.4	83.0	1.9	6.8	1.2	2.6	1.3	0.6	0.2	85.4	1.9	12.7	0.064	0.503	25.687472	-100.495610
T. Der. Santa Catarina (1º Acceso)	62.46	1	2	37022	2.3	83.2	2.0	6.8	0.9	2.5	1.3	0.8	0.2	85.5	2.0	12.5	0.070	0.503	25.687695	-100.495562
Ppia. Monterrey	79.20	1	1	63790	2.0	85.9	1.1	5.6	1.2	1.8	1.3	0.7	0.4	87.9	1.1	11.0	0.072	0.522	25.674396	-100.426438
Ppia. Monterrey	79.20	1	2	60693	2.0	85.9	1.1	5.6	1.2	1.9	1.2	0.7	0.4	87.9	1.1	11.0	0.068	0.522	25.674546	-100.426429

19 CARR: Saltillo - Torreón

CLAVE: 05086

RUTA: MEX-040

AÑO: 2025

LUGAR	ESTACION				CLASIFICACION VEHICULAR EN PORCIENTO										COORDENADAS					
	KM	TE	SC	TDPA	M	A	B	C2	C3	T3S2	T3S3	T3S2R4	OTROS	A	B	C	K'	D	LATITUD	LONGITUD
Saltillo	0.00																			
T. Der. Monclova	6.10	3	1	8056	4.7	59.4	4.8	6.1	2.6	13.7	2.8	4.8	1.1	64.1	4.8	31.1	0.078	0.570	25.452940	-101.081012
T. Der. Monclova	6.10	3	2	7730	4.8	59.7	4.7	6.0	2.7	13.6	3.0	4.6	0.9	64.5	4.7	30.8	0.092	0.570	25.452845	-101.080986

COAHUILA

19 CARR: Saltillo - Torreón

CLAVE: 05086

RUTA: MEX-040

AÑO: 2025

LUGAR	ESTACION				CLASIFICACION VEHICULAR EN PORCIENTO										COORDENADAS					
	KM	TE	SC	TDPA	M	A	B	C2	C3	T3S2	T3S3	T3S2R4	OTROS	A	B	C	K'	D	LATITUD	LONGITUD
X. C. Libramiento Norponiente de Saltillo (Cuota)	9.60	1	1	4743	3.6	79.7	2.5	5.0	3.2	4.8	0.6	0.6	0.0	83.3	2.5	14.2	0.106	0.600	25.453463	-101.059211
X. C. Libramiento Norponiente de Saltillo (Cuota)	9.60	1	2	4792	3.7	79.9	2.8	5.2	3.1	4.3	0.5	0.5	0.0	83.6	2.8	13.6	0.128	0.600	25.453357	-101.059302
T. C. Torreón - Saltillo (Cuota)	33.80																			
T. Izq. General Cepeda	44.14	1	0	3647	3.1	70.8	4.6	6.7	3.0	7.9	2.0	1.5	0.4	73.9	4.6	21.5	0.108	0.585	25.505374	-101.375508
T. Izq. General Cepeda	44.14	3	0	3301	2.2	69.2	5.1	6.8	3.2	9.5	2.6	1.3	0.1	71.4	5.1	23.5	0.078	0.533	25.510969	-101.380916
T. Der. Estación Marte	91.20	1	0	1896	2.9	68.3	5.5	8.1	3.4	7.4	3.1	1.2	0.1	71.2	5.5	23.3	0.084	0.503	25.658957	-101.760235
T. C. Torreón - Saltillo (Cuota)	118.10																			
Ent. Paila	127.90	1	1	5465	3.4	52.1	5.2	5.7	2.3	19.9	3.9	6.5	1.0	55.5	5.2	39.3	0.076	0.500	25.649410	-102.135962
Ent. Paila	127.90	1	2	5434	3.0	53.0	5.0	5.4	2.5	20.1	3.6	6.4	1.0	56.0	5.0	39.0	0.093	0.500	25.649197	-102.135625
T. Der. San Pedro de Las Colonias (La Cuchilla)	204.58	1	1	4467	4.2	46.7	6.0	5.6	2.5	22.8	4.5	6.7	1.0	50.9	6.0	43.1	0.073	0.511	25.632654	-102.866029
T. Der. San Pedro de Las Colonias (La Cuchilla)	204.58	1	2	4499	4.8	47.1	5.6	5.8	2.4	22.5	4.2	6.8	0.8	51.9	5.6	42.5	0.076	0.511	25.625306	-102.865475
T. C. Saltillo - Torreón (Cuota) T2	220.58																			
Emiliano Zapata	221.68	1	0	957	1.6	59.9	4.7	10.5	4.6	14.7	2.9	1.1	0.0	61.5	4.7	33.8	0.063	0.550	25.498038	-102.943178
Emiliano Zapata	221.68	3	0	2055	3.9	70.5	4.0	8.7	4.0	5.4	2.1	1.2	0.2	74.4	4.0	21.6	0.071	0.586	25.489014	-102.952593
T. Der. Libramiento de Matamoros (1º Acceso)	246.80	1	0	8349	5.9	72.9	6.3	8.0	2.4	2.7	1.1	0.6	0.1	78.8	6.3	14.9	0.076	0.566	25.525751	-103.209965
T. Der. Libramiento de Matamoros (1º Acceso)	246.80	3	1	5865	13.2	79.6	1.3	3.2	0.9	0.6	0.5	0.3	0.4	92.8	1.3	5.9	0.087	0.530	25.527953	-103.218780
T. Der. Libramiento de Matamoros (1º Acceso)	246.80	3	2	6504	13.0	80.3	1.3	3.4	0.8	0.5	0.2	0.4	0.1	93.3	1.3	5.4	0.089	0.530	25.527858	-103.218796
Matamoros	252.80	3	1	12478	6.9	84.2	1.8	3.2	1.5	1.0	0.8	0.4	0.2	91.1	1.8	7.1	0.078	0.503	25.534916	-103.247553
Matamoros	252.80	3	2	12683	7.0	84.9	1.5	3.1	1.6	0.8	0.6	0.3	0.2	91.9	1.5	6.6	0.078	0.503	25.534819	-103.247587
T. Der. Libramiento de Matamoros (2º Acceso)	253.12	3	1	17021	5.0	79.4	2.4	5.6	1.8	4.1	0.8	0.6	0.3	84.4	2.4	13.2	0.069	0.511	25.535302	-103.262266
T. Der. Libramiento de Matamoros (2º Acceso)	253.12	3	2	17516	5.2	78.7	2.7	5.7	1.5	4.4	0.9	0.7	0.2	83.9	2.7	13.4	0.070	0.511	25.535169	-103.262275
T. Der. Libramiento de Torreón	264.50	3	1	37792	4.4	88.6	1.3	3.2	0.6	0.5	0.3	0.8	0.3	93.0	1.3	5.7	0.086	0.515	25.535260	-103.389949
T. Der. Libramiento de Torreón	264.50	3	2	36302	4.6	88.5	1.4	2.9	0.6	0.5	0.2	0.9	0.4	93.1	1.4	5.5	0.074	0.515	25.535090	-103.389945
Torreón	291.00																			

20 CARR: Torreón - San Pedro de las Colonias

CLAVE: 05021

RUTA: COA-MEX-030

AÑO: 2025

LUGAR	ESTACION				CLASIFICACION VEHICULAR EN PORCIENTO										COORDENADAS					
	KM	TE	SC	TDPA	M	A	B	C2	C3	T3S2	T3S3	T3S2R4	OTROS	A	B	C	K'	D	LATITUD	LONGITUD
Torreón	0.00	3	1	28440	2.3	95.3	0.4	1.5	0.2	0.1	0.0	0.2	0.0	97.6	0.4	2.0	0.084	0.501	25.578954	-103.413974
Torreón	0.00	3	2	28300	2.2	95.3	0.6	1.1	0.5	0.2	0.0	0.1	0.0	97.5	0.6	1.9	0.083	0.501	25.579010	-103.414075
Libramiento de Torreón	1.50																			
Libramiento Norte de Torreón (Cuota)	10.00																			
Escuadrón 201	13.25	1	1	9725	4.3	83.8	3.2	4.1	1.3	1.5	0.9	0.6	0.3	88.1	3.2	8.7	0.099	0.527	25.669119	-103.353985
Escuadrón 201	13.25	1	2	9822	4.5	83.8	3.4	4.2	1.2	1.4	0.8	0.5	0.2	88.3	3.4	8.3	0.099	0.527	25.669203	-103.354046

COAHUILA

20 CARR : Torreón - San Pedro de las Colonias

CLAVE: 05021

RUTA : COA-MEX-030

AÑO : 2025

LUGAR	ESTACION				CLASIFICACION VEHICULAR EN PORCIENTO													COORDENADAS		
	KM	TE	SC	TDPA	M	A	B	C2	C3	T3S2	T3S3	T3S2R4	OTROS	A	B	C	K'	D	LATITUD	LONGITUD
T. Der. Fco. I. Madero	25.30	1	1	9497	4.5	84.7	2.2	3.6	1.7	2.0	0.7	0.4	0.2	89.2	2.2	8.6	0.083	0.542	25.753541	-103.291672
T. Der. Fco. I. Madero	25.30	1	2	9718	4.7	83.9	2.2	3.7	1.9	1.9	0.9	0.6	0.2	88.6	2.2	9.2	0.080	0.542	25.753643	-103.291767
T. Der. Fco. I. Madero	25.30	3	1	6277	3.7	83.0	2.2	5.9	1.5	2.1	0.8	0.7	0.1	86.7	2.2	11.1	0.085	0.524	25.760911	-103.250762
T. Der. Fco. I. Madero	25.30	3	2	6299	3.9	82.1	2.2	5.7	1.8	2.3	0.9	0.8	0.3	86.0	2.2	11.8	0.074	0.524	25.761032	-103.250657
T. Der. Guadalupe Victoria	32.00	1	1	6683	6.4	79.5	3.9	5.7	1.0	1.7	0.9	0.8	0.1	85.9	3.9	10.2	0.087	0.539	25.762267	-103.228925
T. Der. Guadalupe Victoria	32.00	1	2	6673	6.5	79.5	4.0	5.6	1.0	1.6	0.9	0.8	0.1	86.0	4.0	10.0	0.091	0.539	25.761945	-103.227193
T. Der. Colón	35.00	1	1	6125	4.6	81.4	3.1	5.3	1.8	1.9	0.7	0.9	0.3	86.0	3.1	10.9	0.089	0.506	25.759298	-103.198051
T. Der. Colón	35.00	1	2	5904	4.6	81.1	3.0	5.4	1.9	2.1	0.7	0.9	0.3	85.7	3.0	11.3	0.081	0.506	25.759252	-103.198666
T. Izq. San Lorenzo	38.60	1	1	4708	3.6	82.6	2.8	5.0	1.6	2.1	1.1	1.0	0.2	86.2	2.8	11.0	0.082	0.522	25.761888	-103.166931
T. Izq. San Lorenzo	38.60	1	2	4780	3.3	82.9	3.0	4.9	1.5	2.3	1.0	0.9	0.2	86.2	3.0	10.8	0.080	0.522	25.762019	-103.167116
Urquizo	41.20	1	1	5202	4.2	82.9	2.7	4.9	1.6	2.0	0.8	0.8	0.1	87.1	2.7	10.2	0.084	0.523	25.771003	-103.139650
Urquizo	41.20	1	2	5460	4.2	82.5	3.0	4.8	1.7	2.3	0.7	0.7	0.1	86.7	3.0	10.3	0.088	0.523	25.771074	-103.139703
Urquizo	41.20	3	1	5395	4.1	85.1	3.0	3.8	1.0	1.9	0.5	0.5	0.1	89.2	3.0	7.8	0.088	0.513	25.768106	-103.090229
Urquizo	41.20	3	2	5310	3.7	85.5	3.1	3.9	0.8	1.6	0.6	0.7	0.1	89.2	3.1	7.7	0.095	0.513	25.768545	-103.090981
San Pedro de Las Colonias	55.00	1	1	6934	8.2	82.6	2.4	3.2	1.1	1.4	0.3	0.6	0.2	90.8	2.4	6.8	0.086	0.504	25.757548	-103.005221
San Pedro de Las Colonias	55.00	1	2	6657	8.3	82.4	2.4	3.4	1.2	1.2	0.3	0.6	0.2	90.7	2.4	6.9	0.085	0.504	25.757627	-103.005202

21 CARR : Libramiento Norponiente de Saltillo (Cuota)

CLAVE: 05022

RUTA : MEX-054D

AÑO : 2025

LUGAR	ESTACION				CLASIFICACION VEHICULAR EN PORCIENTO													COORDENADAS		
	KM	TE	SC	TDPA	M	A	B	C2	C3	T3S2	T3S3	T3S2R4	OTROS	A	B	C	K'	D	LATITUD	LONGITUD
T. C. Ent. Morelos - Saltillo	0.00	3	0	7744	4.1	38.9	5.9	6.5	3.6	29.3	2.7	7.8	1.2	43.0	5.9	51.1	0.069	0.510	25.289297	-101.091174
X. C. Saltillo - Torreón	22.44	1	0	6550	7.2	32.5	6.2	5.0	3.5	33.5	3.1	8.0	1.0	39.7	6.2	54.1	0.082	0.648	25.436464	-101.068196
X. C. Saltillo - Torreón	22.44	3	0	13074	4.4	36.1	6.5	4.6	2.8	31.8	3.5	9.3	1.0	40.5	6.5	53.0	0.064	0.500	25.459234	-101.059693
X. C. Saltillo - Monclova	32.44	1	0	11915	6.3	40.4	2.8	4.8	2.9	28.7	3.9	9.2	1.0	46.7	2.8	50.5	0.068	0.535	25.516541	-101.001175
X. C. Saltillo - Monclova	32.44	3	0	9960	6.1	35.2	5.9	4.9	3.0	30.4	3.9	9.6	1.0	41.3	5.9	52.8	0.067	0.526	25.532632	-100.982620
Ojo Caliente	46.21	1	0	11580	5.6	40.9	6.4	5.8	3.4	22.4	4.5	10.1	0.9	46.5	6.4	47.1	0.067	0.513	25.609192	-100.917734

22 CARR : Libramiento Norte de Torreón (Cuota)

CLAVE:

RUTA : MEX-040D

AÑO : 2025

LUGAR	ESTACION				CLASIFICACION VEHICULAR EN PORCIENTO													COORDENADAS		
	KM	TE	SC	TDPA	M	A	B	C2	C3	T3S2	T3S3	T3S2R4	OTROS	A	B	C	K'	D	LATITUD	LONGITUD
X. C. Gómez Palacio - Jiménez	0.00	3	0	4720	2.6	35.7	4.2	8.3	3.0	28.8	5.5	10.7	1.2	38.3	4.2	57.5	0.065	0.505	25.631637	-103.507000
Lim. Edos. Term. Dgo. Ppia. Coah.	15.60																			
X. C. La Cuchilla - Torreón	17.36	1	0	4378	3.7	40.0	4.9	4.9	3.9	25.3	4.7	11.8	0.8	43.7	4.9	51.4	0.062	0.659	25.661029	-103.389144

COAHUILA

22 CARR: Libramiento Norte de Torreón (Cuota)

CLAVE:

RUTA: MEX-040D

AÑO: 2025

LUGAR	ESTACION				CLASIFICACION VEHICULAR EN PORCIENTO										COORDENADAS					
	KM	TE	SC	TDPA	M	A	B	C2	C3	T3S2	T3S3	T3S2R4	OTROS	A	B	C	K'	D	LATITUD	LONGITUD
X. C. La Cuchilla - Torreón	17.36	3	0	3526	4.6	34.3	5.7	4.9	3.5	27.7	6.2	12.0	1.1	38.9	5.7	55.4	0.069	0.563	25.647736	-103.353674
X. C. Torreón - Saltillo	40.70	1	0	4358	5.8	28.4	8.0	6.9	4.5	29.9	4.9	10.6	1.0	34.2	8.0	57.8	0.069	0.522	25.547590	-103.226760

23 CARR: Libramiento Oriente de Saltillo (Cuota)

CLAVE: 00115

RUTA: MEX-057D

AÑO: 2025

LUGAR	ESTACION				CLASIFICACION VEHICULAR EN PORCIENTO										COORDENADAS					
	KM	TE	SC	TDPA	M	A	B	C2	C3	T3S2	T3S3	T3S2R4	OTROS	A	B	C	K'	D	LATITUD	LONGITUD
Ent. La Carbonera	0.00																			
Plaza de Cobro Carbonera	12.30	2	1	8173	0.4	31.8	1.7	6.4	2.9	46.0	3.8	5.6	1.4	32.2	1.7	66.1	0.072	0.500	25.510948	-100.868249
Plaza de Cobro Carbonera	12.30	2	2	8173	0.4	31.8	1.7	6.4	2.9	46.0	3.8	5.6	1.4	32.2	1.7	66.1	0.072	0.500	25.510948	-100.868249
Plaza de Cobro Carbonera	12.30	3	1	9023	5.6	33.3	5.7	5.2	2.4	40.0	2.5	4.4	0.9	38.9	5.7	55.4	0.084	0.597	25.517948	-100.866089
Plaza de Cobro Carbonera	12.30	3	2	9161	5.2	32.7	5.9	5.5	2.2	40.2	2.7	4.6	1.0	37.9	5.9	56.2	0.068	0.597	25.518457	-100.866238
T. C. Saltillo - Monterrey	21.00																			

24 CARR: Nueva Rosita - Ent. Allende (Cuota)

CLAVE: 05502

RUTA: MEX-057D

AÑO: 2025

LUGAR	ESTACION				CLASIFICACION VEHICULAR EN PORCIENTO										COORDENADAS					
	KM	TE	SC	TDPA	M	A	B	C2	C3	T3S2	T3S3	T3S2R4	OTROS	A	B	C	K'	D	LATITUD	LONGITUD
T. C. Monclova - Piedras Negras Sur	0.00	3	1	3272	2.4	69.3	4.7	8.0	2.1	6.4	2.0	4.1	1.0	71.7	4.7	23.6	0.083	0.512	27.937741	-101.193763
T. C. Monclova - Piedras Negras Sur	0.00	3	2	3034	2.2	69.6	4.6	7.9	2.3	6.2	2.0	4.2	1.0	71.8	4.6	23.6	0.099	0.512	27.937642	-101.193949
T. C. Monclova - Piedras Negras Norte	54.00	1	1	2791	1.6	64.7	3.7	12.5	1.4	7.8	1.6	5.6	1.1	66.3	3.7	30.0	0.077	0.521	28.313386	-100.903895
T. C. Monclova - Piedras Negras Norte	54.00	1	2	2968	1.8	65.0	3.4	12.6	1.4	7.8	1.5	5.7	0.8	66.8	3.4	29.8	0.085	0.521	28.313468	-100.904052

25 CARR: Puerto México - La Carbonera (Cuota)

CLAVE: 00115

RUTA: MEX-057D

AÑO: 2025

LUGAR	ESTACION				CLASIFICACION VEHICULAR EN PORCIENTO										COORDENADAS					
	KM	TE	SC	TDPA	M	A	B	C2	C3	T3S2	T3S3	T3S2R4	OTROS	A	B	C	K'	D	LATITUD	LONGITUD
Ent. Puerto México	202.00																			
Plaza de Cobro Los Chorros	203.64	2	1	7303	0.2	31.1	4.4	4.0	1.9	46.0	4.1	6.3	2.0	31.3	4.4	64.3	0.076	0.500	25.186696	-100.731988
Plaza de Cobro Los Chorros	203.64	2	2	7303	0.2	31.1	4.4	4.0	1.9	46.0	4.1	6.3	2.0	31.3	4.4	64.3	0.076	0.500	25.186696	-100.731988
Lim. Edos. Term. N. L. Ppia. Coah.	204.07																			
Lim. Edos. Term. Coah. Ppia. N. L.	204.50																			
Lim. Edos. Term. N. L. Ppia. Coah.	205.76																			
T. Izq. Huachichil	213.39	1	1	7760	2.2	58.1	6.3	2.4	1.5	22.7	1.3	4.7	0.8	60.3	6.3	33.4	0.069	0.530	25.245015	-100.793735
T. Izq. Huachichil	213.39	1	2	7837	2.1	58.3	6.4	2.5	1.3	22.9	1.4	4.5	0.6	60.4	6.4	33.2	0.069	0.530	25.244977	-100.793831

COAHUILA

25 CARR: Puerto México - La Carbonera (Cuota)

CLAVE: 00115

RUTA: MEX-057D

AÑO: 2025

LUGAR	ESTACION				CLASIFICACION VEHICULAR EN PORCIENTO										COORDENADAS					
	KM	TE	SC	TDPA	M	A	B	C2	C3	T3S2	T3S3	T3S2R4	OTROS	A	B	C	K'	D	LATITUD	LONGITUD
T. Der. San Antonio de Las Alazanas	224.94	1	1	9529	3.2	39.7	5.4	6.2	2.0	35.8	2.4	4.4	0.9	42.9	5.4	51.7	0.065	0.503	25.345509	-100.794495
T. Der. San Antonio de Las Alazanas	224.94	1	2	10063	3.1	39.3	5.6	6.3	2.5	35.9	2.0	4.4	0.9	42.4	5.6	52.0	0.072	0.503	25.345528	-100.794592
T. Der. San Antonio de Las Alazanas	224.94	3	1	12745	3.6	40.7	6.7	5.1	2.2	34.9	2.0	4.1	0.7	44.3	6.7	49.0	0.083	0.634	25.351173	-100.794337
T. Der. San Antonio de Las Alazanas	224.94	3	2	13168	3.4	40.4	6.5	5.0	2.5	35.0	1.9	4.5	0.8	43.8	6.5	49.7	0.066	0.634	25.352038	-100.794403
Los Lirios	228.30	3	1	12203	2.4	48.5	4.4	4.8	2.4	30.1	2.8	3.8	0.8	50.9	4.4	44.7	0.086	0.582	25.406940	-100.800651
Los Lirios	228.30	3	2	11910	2.5	49.1	4.2	4.7	2.5	30.0	2.6	3.6	0.8	51.6	4.2	44.2	0.112	0.582	25.406927	-100.800741
Ent. La Carbonera	235.60																			

26 CARR: Saltillo - Monterrey (Cuota)

CLAVE: 00087

RUTA: MEX-040D

AÑO: 2025

LUGAR	ESTACION				CLASIFICACION VEHICULAR EN PORCIENTO										COORDENADAS					
	KM	TE	SC	TDPA	M	A	B	C2	C3	T3S2	T3S3	T3S2R4	OTROS	A	B	C	K'	D	LATITUD	LONGITUD
Ojo Caliente	46.21	3	1	5306	7.9	45.3	4.8	6.0	2.7	20.2	3.2	9.0	0.9	53.2	4.8	42.0	0.070	0.512	25.617019	-100.906759
Ojo Caliente	46.21	3	2	5600	7.5	44.8	4.8	5.8	2.6	20.9	3.4	9.3	0.9	52.3	4.8	42.9	0.068	0.512	25.617085	-100.906813
Lim. Edos. Term. Coah. Ppia. N. L.	61.08																			
T. Izq. Anillo Periférico de Monterrey (Cuota)	82.00	1	1	12152	3.2	59.7	5.3	6.1	2.1	17.1	2.0	3.5	1.0	62.9	5.3	31.8	0.074	0.596	25.697597	-100.597707
T. Izq. Anillo Periférico de Monterrey (Cuota)	82.00	1	2	12887	2.8	60.2	5.1	6.0	2.3	17.3	1.9	3.5	0.9	63.0	5.1	31.9	0.099	0.596	25.697682	-100.597703
T. Izq. Anillo Periférico de Monterrey (Cuota)	82.00	3	1	7198	1.8	88.3	2.3	4.4	1.4	0.9	0.4	0.2	0.3	90.1	2.3	7.6	0.107	0.521	25.683195	-100.524085
T. Izq. Anillo Periférico de Monterrey (Cuota)	82.00	3	2	6604	1.8	88.7	2.5	4.2	1.0	1.0	0.3	0.2	0.3	90.5	2.5	7.0	0.098	0.521	25.683279	-100.524064
Morones Prieto	96.10																			

27 CARR: Saltillo - Torreón (Cuota) T1

CLAVE:

RUTA: MEX-040D

AÑO: 2025

LUGAR	ESTACION				CLASIFICACION VEHICULAR EN PORCIENTO										COORDENADAS					
	KM	TE	SC	TDPA	M	A	B	C2	C3	T3S2	T3S3	T3S2R4	OTROS	A	B	C	K'	D	LATITUD	LONGITUD
T. C. Saltillo - Torreón Este	0.00																			
Plaza de Cobro Plan de Ayala	0.50	2	1	3980	1.6	49.7	5.0	5.2	1.8	22.3	4.5	8.2	1.7	51.3	5.0	43.7	0.091	0.500	25.444203	-101.303908
Plaza de Cobro Plan de Ayala	0.50	2	2	3980	1.6	49.7	5.0	5.2	1.8	22.3	4.5	8.2	1.7	51.3	5.0	43.7	0.091	0.500	25.444203	-101.303908
T. C. Saltillo - Torreón Oeste	76.50	1	1	5530	4.7	47.7	6.1	5.3	2.2	22.1	3.8	7.1	1.0	52.4	6.1	41.5	0.067	0.679	25.638268	-102.018340
T. C. Saltillo - Torreón Oeste	76.50	1	2	6210	4.4	47.6	6.3	5.3	2.2	22.2	3.8	7.1	1.1	52.0	6.3	41.7	0.083	0.679	25.636590	-102.012890

COAHUILA

28 CARR: Saltillo - Torreón (Cuota) T2

CLAVE:

RUTA: MEX-040D

AÑO: 2025

LUGAR	ESTACION				CLASIFICACION VEHICULAR EN PORCIENTO										COORDENADAS					
	KM	TE	SC	TDPA	M	A	B	C2	C3	T3S2	T3S3	T3S2R4	OTROS	A	B	C	K'	D	LATITUD	LONGITUD
T. C. Saltillo - Torreón Este	0.00																			
Plaza de Cobro La Cuchilla	1.00	2	1	3826	0.4	47.2	6.9	2.4	1.4	24.9	5.4	8.7	2.7	47.6	6.9	45.5	0.091	0.500	25.627052	-102.878352
Plaza de Cobro La Cuchilla	1.00	2	2	3826	0.4	47.2	6.9	2.4	1.4	24.9	5.4	8.7	2.7	47.6	6.9	45.5	0.091	0.500	25.627052	-102.878352
T. Der. San Pedro de Las Colonias (La Cuchilla)	1.10	3	1	4907	4.7	45.4	6.2	5.1	1.9	23.6	3.6	8.4	1.1	50.1	6.2	43.7	0.060	0.524	25.622915	-102.887470
T. Der. San Pedro de Las Colonias (La Cuchilla)	1.10	3	2	4415	4.7	45.4	6.3	5.1	1.7	23.5	4.0	8.2	1.1	50.1	6.3	43.6	0.063	0.524	25.622794	-102.887412
Matamoros	37.00	1	1	4592	4.1	50.2	5.4	4.5	2.3	20.8	4.9	6.7	1.1	54.3	5.4	40.3	0.069	0.519	25.539761	-103.196383
Matamoros	37.00	1	2	4734	4.1	50.8	5.2	4.8	2.4	20.7	4.4	6.8	0.8	54.9	5.2	39.9	0.072	0.519	25.539512	-103.196247
T. C. Saltillo - Torreón Oeste	37.80																			

29 CARR: Allende - Villa Unión

CLAVE: 05001

RUTA: COA-015

AÑO: 2025

LUGAR	ESTACION				CLASIFICACION VEHICULAR EN PORCIENTO										COORDENADAS					
	KM	TE	SC	TDPA	M	A	B	C2	C3	T3S2	T3S3	T3S2R4	OTROS	A	B	C	K'	D	LATITUD	LONGITUD
Allende	0.00	3	0	2100	1.8	87.0	1.5	8.9	0.7	0.1	0.0	0.0	0.0	88.8	1.5	9.7	0.096	0.545	28.335624	-100.838244
Villa Unión	19.00																			

30 CARR: Corredor Libramiento de San Pedro

CLAVE: 05023

RUTA: COA-087

AÑO: 2025

LUGAR	ESTACION				CLASIFICACION VEHICULAR EN PORCIENTO										COORDENADAS					
	KM	TE	SC	TDPA	M	A	B	C2	C3	T3S2	T3S3	T3S2R4	OTROS	A	B	C	K'	D	LATITUD	LONGITUD
T. C. Monclova - San Pedro de las Colonias	0.00	3	0	3834	14.6	69.4	3.0	5.1	1.6	3.3	1.4	1.4	0.2	84.0	3.0	13.0	0.095	0.537	25.774538	-102.983039
T. C. La Cuchilla - Torreón	3.60	1	0	6351	15.7	72.8	2.0	3.6	1.2	2.4	1.0	1.2	0.1	88.5	2.0	9.5	0.076	0.567	25.759302	-103.000077

31 CARR: Cuatro Ciénegas - Ocampo

CLAVE: 05026

RUTA: COA-048

AÑO: 2025

LUGAR	ESTACION				CLASIFICACION VEHICULAR EN PORCIENTO										COORDENADAS					
	KM	TE	SC	TDPA	M	A	B	C2	C3	T3S2	T3S3	T3S2R4	OTROS	A	B	C	K'	D	LATITUD	LONGITUD
Cuatro Ciénegas	0.00	3	0	1366	3.8	89.4	0.6	5.4	0.8	0.0	0.0	0.0	0.0	93.2	0.6	6.2	0.081	0.527	27.000194	-102.072670
Ocampo	50.00																			

32 CARR: El Sauz - Palau

CLAVE: 05060

RUTA: COA-022

AÑO: 2025

LUGAR	ESTACION				CLASIFICACION VEHICULAR EN PORCIENTO										COORDENADAS					
	KM	TE	SC	TDPA	M	A	B	C2	C3	T3S2	T3S3	T3S2R4	OTROS	A	B	C	K'	D	LATITUD	LONGITUD
El Sauz	0.00	3	1	1420	2.3	74.0	4.8	6.8	3.6	3.9	2.9	1.6	0.1	76.3	4.8	18.9	0.094	0.536	27.640466	-101.190532

COAHUILA

32 CARR: El Sauz - Palau

CLAVE: 05060

RUTA: COA-022

AÑO: 2025

LUGAR	ESTACION				CLASIFICACION VEHICULAR EN PORCIENTO													COORDENADAS		
	KM	TE	SC	TDPA	M	A	B	C2	C3	T3S2	T3S3	T3S2R4	OTROS	A	B	C	K'	D	LATITUD	LONGITUD
El Sauz	0.00	3	2	1443	2.5	72.3	4.8	6.9	4.0	4.4	3.3	1.7	0.1	74.8	4.8	20.4	0.080	0.536	27.640381	-101.190727
Minas de Barroterán	31.00	3	1	1203	2.9	75.4	3.3	7.7	3.6	2.9	2.2	1.5	0.5	78.3	3.3	18.4	0.087	0.511	27.660751	-101.288409
Minas de Barroterán	31.00	3	2	1212	3.3	77.2	3.0	7.5	2.8	2.7	2.0	1.4	0.1	80.5	3.0	16.5	0.080	0.511	27.660621	-101.288471
Palau	42.50	1	1	1455	3.0	75.8	3.8	6.9	2.7	3.9	2.4	1.3	0.2	78.8	3.8	17.4	0.071	0.524	27.875234	-101.415570
Palau	42.50	1	2	1367	3.6	75.6	3.5	6.9	2.4	3.9	2.1	1.7	0.3	79.2	3.5	17.3	0.075	0.524	27.875222	-101.415666

33 CARR: Emiliano Zapata - Viesca

CLAVE: 05521

RUTA: COA-082

AÑO: 2025

LUGAR	ESTACION				CLASIFICACION VEHICULAR EN PORCIENTO													COORDENADAS		
	KM	TE	SC	TDPA	M	A	B	C2	C3	T3S2	T3S3	T3S2R4	OTROS	A	B	C	K'	D	LATITUD	LONGITUD
Emiliano Zapata	0.00	3	0	1059	4.2	85.7	1.1	6.4	1.1	0.5	0.6	0.2	0.2	89.9	1.1	9.0	0.088	0.645	25.486069	-102.943276
Viesca	24.00																			

34 CARR: Ent. La Rosa - General Cepeda

CLAVE: 05034

RUTA: COA-034

AÑO: 2025

LUGAR	ESTACION				CLASIFICACION VEHICULAR EN PORCIENTO													COORDENADAS		
	KM	TE	SC	TDPA	M	A	B	C2	C3	T3S2	T3S3	T3S2R4	OTROS	A	B	C	K'	D	LATITUD	LONGITUD
T. C. Saltillo - Torreón	0.00	3	0	1294	1.0	90.8	1.1	4.9	0.9	1.0	0.3	0.0	0.0	91.8	1.1	7.1	0.126	0.509	25.506069	-101.379931
Gral. Cepeda	21.00	1	0	1329	4.9	82.7	3.2	6.3	1.9	0.5	0.2	0.2	0.1	87.6	3.2	9.2	0.086	0.570	25.387428	-101.476397

35 CARR: Ent. Paila - Parras de La Fuente

CLAVE: 05014

RUTA: COA-102

AÑO: 2025

LUGAR	ESTACION				CLASIFICACION VEHICULAR EN PORCIENTO													COORDENADAS		
	KM	TE	SC	TDPA	M	A	B	C2	C3	T3S2	T3S3	T3S2R4	OTROS	A	B	C	K'	D	LATITUD	LONGITUD
Ent. Paila	0.00	3	0	3078	3.4	83.2	2.4	6.4	1.3	1.9	0.7	0.5	0.2	86.6	2.4	11.0	0.089	0.507	25.643819	-102.148768
Parras de La Fuente	20.05	1	1	2721	3.7	84.5	2.4	5.9	0.9	1.1	0.8	0.5	0.2	88.2	2.4	9.4	0.114	0.611	25.468444	-102.173873
Parras de La Fuente	20.05	1	2	2485	3.7	84.9	2.5	6.0	0.7	1.0	0.7	0.3	0.2	88.6	2.5	8.9	0.097	0.611	25.468433	-102.173785

36 CARR: Libramiento de Matamoros

CLAVE: 05032

RUTA: COA

AÑO: 2025

LUGAR	ESTACION				CLASIFICACION VEHICULAR EN PORCIENTO													COORDENADAS		
	KM	TE	SC	TDPA	M	A	B	C2	C3	T3S2	T3S3	T3S2R4	OTROS	A	B	C	K'	D	LATITUD	LONGITUD
T. C. Saltillo - Torreón	0.00	3	0	10997	5.4	79.1	1.8	6.6	3.4	2.2	0.9	0.4	0.2	84.5	1.8	13.7	0.087	0.540	25.530625	-103.218432
X. C. Matamoros - La Unión	3.70	3	1	10395	5.0	71.5	2.7	6.5	2.9	7.1	1.4	2.2	0.7	76.5	2.7	20.8	0.067	0.521	25.538814	-103.226450
X. C. Matamoros - La Unión	3.70	3	2	9911	5.2	71.6	2.9	6.4	2.6	6.9	1.5	2.0	0.9	76.8	2.9	20.3	0.065	0.521	25.538585	-103.226412

COAHUILA

36 CARR: Libramiento de Matamoros

CLAVE: 05032

RUTA: COA

AÑO: 2025

LUGAR	ESTACION				CLASIFICACION VEHICULAR EN PORCIENTO										COORDENADAS					
	KM	TE	SC	TDPA	M	A	B	C2	C3	T3S2	T3S3	T3S2R4	OTROS	A	B	C	K'	D	LATITUD	LONGITUD
T. C. Saltillo - Torreón	5.32	1	1	9565	6.1	75.9	2.2	5.9	3.0	4.6	1.2	0.7	0.4	82.0	2.2	15.8	0.088	0.561	25.536797	-103.244921
T. C. Saltillo - Torreón	5.32	1	2	9574	5.9	76.2	2.3	5.7	2.8	4.4	1.3	0.9	0.5	82.1	2.3	15.6	0.075	0.561	25.536724	-103.244907

37 CARR: Libramiento de Saltillo J.L.P.

CLAVE: 05031

RUTA: COA

AÑO: 2025

LUGAR	ESTACION				CLASIFICACION VEHICULAR EN PORCIENTO										COORDENADAS					
	KM	TE	SC	TDPA	M	A	B	C2	C3	T3S2	T3S3	T3S2R4	OTROS	A	B	C	K'	D	LATITUD	LONGITUD
T. C. Ent. Bella Unión - Saltillo	0.00																			
X. C. Saltillo - Arteaga	2.50	3	1	22590	2.7	75.4	3.3	7.2	4.2	5.3	0.7	1.0	0.2	78.1	3.3	18.6	0.146	0.716	25.450099	-100.892793
X. C. Saltillo - Arteaga	2.50	3	2	21548	2.5	75.7	3.5	6.8	4.0	5.1	0.7	1.4	0.3	78.2	3.5	18.3	0.123	0.716	25.449752	-100.892854
T. C. Saltillo - Monterrey	18.00	1	1	15004	2.8	72.2	2.6	7.5	2.9	9.7	0.7	1.3	0.3	75.0	2.6	22.4	0.110	0.626	25.552668	-100.922001
T. C. Saltillo - Monterrey	18.00	1	2	14644	2.7	72.5	2.7	7.5	2.6	10.1	0.9	0.7	0.3	75.2	2.7	22.1	0.105	0.626	25.552913	-100.922222

38 CARR: Libramiento de Torreón-Gómez Palacio-Lerdo

CLAVE: 05516

RUTA: COA-DGO-MEX-040-049

AÑO: 2025

LUGAR	ESTACION				CLASIFICACION VEHICULAR EN PORCIENTO										COORDENADAS					
	KM	TE	SC	TDPA	M	A	B	C2	C3	T3S2	T3S3	T3S2R4	OTROS	A	B	C	K'	D	LATITUD	LONGITUD
X. C. Saltillo - Torreón	0.00	3	1	44279	5.2	84.1	1.6	3.5	1.4	2.0	0.7	1.0	0.5	89.3	1.6	9.1	0.082	0.522	25.540209	-103.370512
X. C. Saltillo - Torreón	0.00	3	2	45885	5.3	84.2	1.5	3.9	1.3	1.8	0.6	1.1	0.3	89.5	1.5	9.0	0.077	0.522	25.540109	-103.370969
T. C. Torreón - San Pedro de las Colonias (Alta)	7.30	1	1	20632	1.7	86.2	1.3	3.6	2.2	2.7	1.2	0.9	0.2	87.9	1.3	10.8	0.091	0.519	25.582585	-103.402789
T. C. Torreón - San Pedro de las Colonias (Baja)	7.30	1	1	43247	3.7	84.3	1.3	4.6	0.7	3.3	0.9	1.0	0.2	88.0	1.3	10.7	0.082	0.519	25.582611	-103.402777
T. C. Torreón - San Pedro de las Colonias (Alta)	7.30	1	2	21133	1.8	86.4	1.2	3.7	2.0	3.0	0.9	0.7	0.3	88.2	1.2	10.6	0.076	0.519	25.582252	-103.402969
T. C. Torreón - San Pedro de las Colonias (Baja)	7.30	1	2	48421	3.5	83.6	1.4	4.7	0.8	3.5	1.0	1.2	0.3	87.1	1.4	11.5	0.073	0.519	25.582221	-103.402976
Lim. Edos. Term. Coah. Ppia. Dgo.	11.80																			
X. C. Gómez Palacio-Tlahualilo	15.90	1	1	34600	3.0	86.7	1.0	4.8	2.4	1.1	0.5	0.4	0.1	89.7	1.0	9.3	0.090	0.637	25.580377	-103.477439
X. C. Gómez Palacio-Tlahualilo	15.90	1	2	37987	3.0	86.7	1.2	5.1	2.1	1.0	0.4	0.4	0.1	89.7	1.2	9.1	0.095	0.637	25.580192	-103.477879
X. C. Gómez Palacio-Jiménez	18.75	3	1	39373	6.0	85.4	0.9	4.2	1.0	1.0	0.3	0.9	0.3	91.4	0.9	7.7	0.080	0.539	25.591215	-103.511132
X. C. Gómez Palacio-Jiménez	18.75	3	2	36770	5.7	85.5	0.9	4.1	1.3	1.1	0.4	0.7	0.3	91.2	0.9	7.9	0.079	0.539	25.591066	-103.510755
T. C. Durango - Torreón	28.60																			

39 CARR: Matamoros - El Fresno

CLAVE: 05023

RUTA: COA-078

AÑO: 2025

LUGAR	ESTACION				CLASIFICACION VEHICULAR EN PORCIENTO										COORDENADAS					
	KM	TE	SC	TDPA	M	A	B	C2	C3	T3S2	T3S3	T3S2R4	OTROS	A	B	C	K'	D	LATITUD	LONGITUD
Matamoros	0.00	3	0	2970	18.3	71.3	1.4	4.4	2.6	1.3	0.3	0.4	0.0	89.6	1.4	9.0	0.103	0.511	25.502559	-103.224094

COAHUILA

39 CARR: Matamoros - El Fresno

CLAVE: 05023

RUTA: COA-078

AÑO: 2025

LUGAR	ESTACION				CLASIFICACION VEHICULAR EN PORCIENTO													COORDENADAS		
	KM	TE	SC	TDPA	M	A	B	C2	C3	T3S2	T3S3	T3S2R4	OTROS	A	B	C	K'	D	LATITUD	LONGITUD
El Fresno	12.60	1	0	1799	23.1	67.7	1.0	7.1	0.8	0.2	0.1	0.0	0.0	90.8	1.0	8.2	0.102	0.603	25.426513	-103.228088

40 CARR: Matamoros - La Unión

CLAVE: 05023

RUTA: COA-070

AÑO: 2025

LUGAR	ESTACION				CLASIFICACION VEHICULAR EN PORCIENTO													COORDENADAS		
	KM	TE	SC	TDPA	M	A	B	C2	C3	T3S2	T3S3	T3S2R4	OTROS	A	B	C	K'	D	LATITUD	LONGITUD
X. C. Libramiento de Matamoros	1.00	3	1	2845	7.6	76.6	2.4	7.8	2.4	1.6	0.7	0.7	0.2	84.2	2.4	13.4	0.083	0.538	25.543324	-103.222399
X. C. Libramiento de Matamoros	1.00	3	2	2933	7.7	77.2	2.1	8.1	2.1	1.5	0.6	0.5	0.2	84.9	2.1	13.0	0.074	0.538	25.543362	-103.222523
La Partida	14.09	1	0	5951	7.7	75.8	1.3	10.7	1.6	1.3	0.5	0.8	0.3	83.5	1.3	15.2	0.082	0.539	25.586266	-103.296632
La Partida	14.09	3	0	7311	7.8	79.3	1.6	6.9	1.4	1.2	0.6	0.9	0.3	87.1	1.6	11.3	0.073	0.655	25.594201	-103.313737
X. C. Antigua Carretera a San Pedro	22.00	1	1	10717	6.1	86.3	1.0	3.8	0.8	0.8	0.6	0.4	0.2	92.4	1.0	6.6	0.094	0.549	25.598306	-103.374693
X. C. Antigua Carretera a San Pedro	22.00	1	2	11288	5.9	86.6	0.8	4.0	0.6	0.9	0.5	0.4	0.3	92.5	0.8	6.7	0.083	0.549	25.598201	-103.374700
La Unión	25.00	1	1	12774	5.7	86.5	0.7	4.8	0.9	0.7	0.4	0.2	0.1	92.2	0.7	7.1	0.093	0.585	25.597720	-103.389272
La Unión	25.00	1	2	12756	5.8	86.4	0.7	4.7	0.8	0.6	0.5	0.3	0.2	92.2	0.7	7.1	0.086	0.585	25.597637	-103.389269

41 CARR: Monclova - Estación Candela

CLAVE: 00501

RUTA: COA-030-NL

AÑO: 2025

LUGAR	ESTACION				CLASIFICACION VEHICULAR EN PORCIENTO													COORDENADAS		
	KM	TE	SC	TDPA	M	A	B	C2	C3	T3S2	T3S3	T3S2R4	OTROS	A	B	C	K'	D	LATITUD	LONGITUD
T. C. Monclova - Piedras Negras	0.00																			
T. Izq. Libramiento de Monclova	5.10	1	1	3667	7.9	86.5	0.9	2.5	1.1	0.6	0.2	0.3	0.0	94.4	0.9	4.7	0.088	0.504	26.928301	-101.389052
T. Izq. Libramiento de Monclova	5.10	1	2	3585	7.8	87.1	1.0	2.6	0.9	0.4	0.1	0.1	0.0	94.9	1.0	4.1	0.095	0.504	26.928360	-101.389144
Lim. Edos. Term. Coah. Ppia. N. L.	118.00																			
T. C. Monterrey - Colombia	125.50	1	0	478	0.2	75.5	0.8	14.8	1.0	6.7	0.5	0.5	0.0	75.7	0.8	23.5	0.096	0.717	26.837824	-100.493909

42 CARR: Morelos - Ent. Las Corrientes

CLAVE: 05500

RUTA: COA-010

AÑO: 2025

LUGAR	ESTACION				CLASIFICACION VEHICULAR EN PORCIENTO													COORDENADAS		
	KM	TE	SC	TDPA	M	A	B	C2	C3	T3S2	T3S3	T3S2R4	OTROS	A	B	C	K'	D	LATITUD	LONGITUD
T. C. Morelos - Cd. Acuña	0.00	3	0	1989	3.2	88.7	2.5	4.1	1.2	0.1	0.1	0.1	0.0	91.9	2.5	5.6	0.101	0.575	28.401768	-100.895250
Los Álamos	9.20	1	0	1153	4.9	89.0	1.5	4.3	0.3	0.0	0.0	0.0	0.0	93.9	1.5	4.6	0.095	0.500	28.355508	-100.942504
T. C. Monclova - Piedras Negras	20.00																			

COAHUILA

43 CARR: Puerto de Flores - El Hondable

CLAVE: 05512

RUTA: COA-112

AÑO: 2025

LUGAR	ESTACION				CLASIFICACION VEHICULAR EN PORCIENTO													COORDENADAS		
	KM	TE	SC	TDPA	M	A	B	C2	C3	T3S2	T3S3	T3S2R4	OTROS	A	B	C	K'	D	LATITUD	LONGITUD
T. C. Aut. Puerto México - Ojo Caliente	0.00	3	0	3420	1.6	81.1	0.8	14.3	0.6	0.9	0.4	0.2	0.1	82.7	0.8	16.5	0.141	0.510	25.340706	-100.777717
San Antonio de Las Alazanas	24.00	1	0	2455	1.5	80.6	1.4	14.0	0.8	1.1	0.4	0.2	0.0	82.1	1.4	16.5	0.160	0.513	25.278682	-100.601333
El Hondable	50.50																			

44 CARR: Ramal a Hipólito

CLAVE: 05509

RUTA: COA-114

AÑO: 2025

LUGAR	ESTACION				CLASIFICACION VEHICULAR EN PORCIENTO													COORDENADAS		
	KM	TE	SC	TDPA	M	A	B	C2	C3	T3S2	T3S3	T3S2R4	OTROS	A	B	C	K'	D	LATITUD	LONGITUD
T. C. Saltillo - Torreón	0.00	3	0	613	10.9	56.5	9.1	11.7	5.1	3.6	1.8	1.2	0.1	67.4	9.1	23.5	0.096	0.627	25.595147	-101.452040
Hipólito	13.00																			

45 CARR: Ramal a Lamadrid

CLAVE: 05522

RUTA: COA-042

AÑO: 2025

LUGAR	ESTACION				CLASIFICACION VEHICULAR EN PORCIENTO													COORDENADAS		
	KM	TE	SC	TDPA	M	A	B	C2	C3	T3S2	T3S3	T3S2R4	OTROS	A	B	C	K'	D	LATITUD	LONGITUD
T. C. Monclova - San Pedro de las Colonias	0.00	3	0	1297	4.5	85.2	3.6	6.1	0.6	0.0	0.0	0.0	0.0	89.7	3.6	6.7	0.113	0.571	27.016571	-101.791945
Lamadrid	4.00																			

46 CARR: Sabinas - Don Martín

CLAVE: 05501

RUTA: COA-025

AÑO: 2025

LUGAR	ESTACION				CLASIFICACION VEHICULAR EN PORCIENTO													COORDENADAS		
	KM	TE	SC	TDPA	M	A	B	C2	C3	T3S2	T3S3	T3S2R4	OTROS	A	B	C	K'	D	LATITUD	LONGITUD
Sabinas	0.00	3	0	2468	3.1	69.0	1.7	23.9	0.7	1.4	0.1	0.1	0.0	72.1	1.7	26.2	0.099	0.508	27.849161	-101.096711
T. Izq. La Mezquitas	3.00	3	0	822	2.4	70.0	0.5	24.0	0.8	1.2	0.6	0.3	0.2	72.4	0.5	27.1	0.085	0.529	27.828781	-101.069019
Juárez	53.00	3	0	395	1.6	81.0	1.3	13.2	0.7	1.3	0.5	0.2	0.2	82.6	1.3	16.1	0.099	0.513	27.615463	-100.701503
Don Martín	66.00	1	0	427	1.2	81.4	0.6	12.6	1.2	1.5	0.7	0.5	0.3	82.6	0.6	16.8	0.103	0.568	27.535542	-100.623795

47 CARR: Saltillo - Arteaga

CLAVE: 05008

RUTA: COA-106

AÑO: 2025

LUGAR	ESTACION				CLASIFICACION VEHICULAR EN PORCIENTO													COORDENADAS		
	KM	TE	SC	TDPA	M	A	B	C2	C3	T3S2	T3S3	T3S2R4	OTROS	A	B	C	K'	D	LATITUD	LONGITUD
Saltillo	0.00	3	1	18422	2.5	91.7	0.6	2.8	1.2	0.7	0.2	0.2	0.1	94.2	0.6	5.2	0.085	0.631	25.442240	-100.952800
Saltillo	0.00	3	2	17870	2.4	91.7	0.6	2.8	1.2	0.6	0.2	0.4	0.1	94.1	0.6	5.3	0.126	0.631	25.442369	-100.952828
X. C. Libramiento de Matehuala - Monterrey	9.00	1	1	9221	2.2	87.6	1.8	5.1	1.6	1.2	0.3	0.1	0.1	89.8	1.8	8.4	0.109	0.622	25.444539	-100.897138
X. C. Libramiento de Matehuala - Monterrey	9.00	1	2	8790	2.4	86.5	2.2	5.5	1.7	1.1	0.3	0.1	0.2	88.9	2.2	8.9	0.113	0.622	25.444633	-100.897159

COAHUILA

47 CARR: Saltillo - Arteaga

CLAVE: 05008

RUTA: COA-106

AÑO: 2025

LUGAR	ESTACION				CLASIFICACION VEHICULAR EN PORCIENTO										COORDENADAS					
	KM	TE	SC	TDPA	M	A	B	C2	C3	T3S2	T3S3	T3S2R4	OTROS	A	B	C	K'	D	LATITUD	LONGITUD
X. C. Libramiento de Matehuala - Monterrey	9.00	3	1	4559	2.7	90.6	1.2	3.4	1.2	0.5	0.3	0.1	0.0	93.3	1.2	5.5	0.112	0.530	25.449159	-100.885756
X. C. Libramiento de Matehuala - Monterrey	9.00	3	2	4581	2.5	89.8	1.6	3.5	1.4	0.7	0.4	0.1	0.0	92.3	1.6	6.1	0.143	0.530	25.449346	-100.885700
Arteaga	12.00	1	1	4201	3.1	90.8	1.0	3.4	1.1	0.3	0.2	0.1	0.0	93.9	1.0	5.1	0.116	0.697	25.448747	-100.869668
Arteaga	12.00	1	2	4341	3.5	90.3	1.0	3.4	1.2	0.3	0.2	0.1	0.0	93.8	1.0	5.2	0.150	0.697	25.448829	-100.869671
T. C. Ent. Bella Unión - Saltillo	18.00																			

48 CARR: San Buenaventura - Estación Hermanas

CLAVE: 05004

RUTA: COA-034

AÑO: 2025

LUGAR	ESTACION				CLASIFICACION VEHICULAR EN PORCIENTO										COORDENADAS					
	KM	TE	SC	TDPA	M	A	B	C2	C3	T3S2	T3S3	T3S2R4	OTROS	A	B	C	K'	D	LATITUD	LONGITUD
San Buenaventura	0.00	3	0	2140	3.7	88.8	0.6	3.6	1.5	1.5	0.3	0.0	0.0	92.5	0.6	6.9	0.089	0.521	27.078918	-101.531409
T. Izq. Santa Gertrudis	2.48	1	0	1870	4.3	87.7	0.8	4.2	1.5	1.2	0.3	0.0	0.0	92.0	0.8	7.2	0.072	0.526	27.089116	-101.514115
Abasolo	15.71	1	0	1390	4.6	87.6	1.1	4.5	1.0	0.7	0.5	0.0	0.0	92.2	1.1	6.7	0.102	0.563	27.173271	-101.432327
Los Rodríguez	31.00	3	0	609	4.3	88.6	1.0	4.1	1.6	0.4	0.0	0.0	0.0	92.9	1.0	6.1	0.130	0.570	27.199482	-101.350421
Estación Hermanas	50.00	1	0	910	1.4	90.2	0.8	4.3	1.3	1.3	0.6	0.1	0.0	91.6	0.8	7.6	0.114	0.577	27.220360	-101.244684

49 CARR: T. C. (Ent. Morelos - Saltillo) - Parras de La Fuente

CLAVE: 05510

RUTA: COA-105

AÑO: 2025

LUGAR	ESTACION				CLASIFICACION VEHICULAR EN PORCIENTO										COORDENADAS					
	KM	TE	SC	TDPA	M	A	B	C2	C3	T3S2	T3S3	T3S2R4	OTROS	A	B	C	K'	D	LATITUD	LONGITUD
T. C. Morelos - Saltillo	0.00	3	1	9174	4.4	65.5	3.1	10.0	3.4	10.5	1.5	1.0	0.6	69.9	3.1	27.0	0.128	0.670	25.261348	-101.100717
T. C. Morelos - Saltillo	0.00	3	2	8928	4.3	65.5	3.0	9.8	3.8	10.6	1.4	1.1	0.5	69.8	3.0	27.2	0.110	0.670	25.261543	-101.099533
Gral. Cepeda	40.00	1	0	2203	4.1	77.9	4.2	12.8	0.6	0.2	0.1	0.1	0.0	82.0	4.2	13.8	0.074	0.549	25.366034	-101.480619
Gral. Cepeda	40.00	3	0	996	2.9	72.9	3.7	18.6	0.9	0.6	0.4	0.0	0.0	75.8	3.7	20.5	0.094	0.532	25.385093	-101.494150
Parras de La Fuente	102.00	1	0	3416	3.1	87.6	1.2	4.9	1.3	0.9	0.4	0.5	0.1	90.7	1.2	8.1	0.096	0.637	25.443831	-102.157073

50 CARR: T. C. (Saltillo - Monclova) - Ramos Arizpe

CLAVE: 05508

RUTA: COA

AÑO: 2025

LUGAR	ESTACION				CLASIFICACION VEHICULAR EN PORCIENTO										COORDENADAS					
	KM	TE	SC	TDPA	M	A	B	C2	C3	T3S2	T3S3	T3S2R4	OTROS	A	B	C	K'	D	LATITUD	LONGITUD
T. C. Saltillo - Monclova	0.00	3	0	7670	4.7	70.7	2.3	7.1	3.2	8.8	1.1	1.5	0.6	75.4	2.3	22.3	0.094	0.506	25.529727	-101.002738
Ramos Arizpe	12.00																			

COAHUILA

51 CARR: Torreón - Escuadrón 201

CLAVE: 05022

RUTA: COA-011

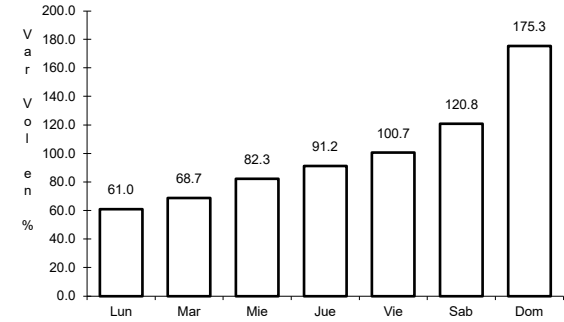
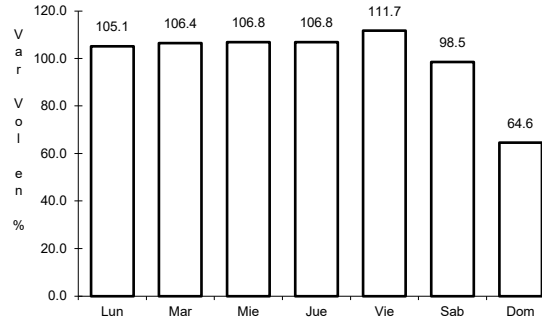
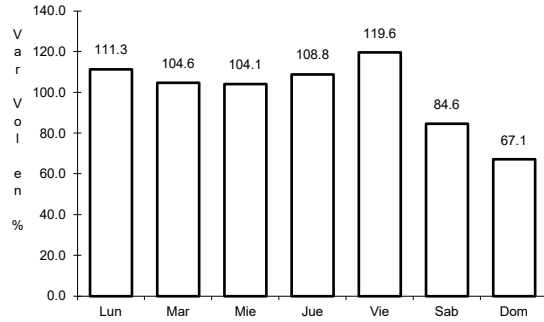
AÑO: 2025

L U G A R	E S T A C I O N				C L A S I F I C A C I O N V E H I C U L A R E N P O R C I E N T O														C O O R D E N A D A S	
	KM	TE	SC	TDPA	M	A	B	C2	C3	T3S2	T3S3	T3S2R4	OTROS	A	B	C	K'	D	LATITUD	LONGITUD
Torreón	0.00	3	1	19291	5.9	83.2	0.9	4.7	1.1	2.1	0.7	1.0	0.4	89.1	0.9	10.0	0.071	0.507	25.583623	-103.388217
Torreón	0.00	3	2	19831	6.1	83.4	1.1	4.4	1.2	2.0	1.0	0.6	0.2	89.5	1.1	9.4	0.066	0.507	25.583693	-103.388339
El Aguila	11.35	1	0	4390	11.4	79.6	1.1	6.1	0.9	0.4	0.2	0.3	0.0	91.0	1.1	7.9	0.086	0.573	25.626016	-103.367032
Escuadrón 201	17.06	1	0	1627	9.0	81.7	0.7	6.0	0.8	1.0	0.6	0.2	0.0	90.7	0.7	8.6	0.086	0.507	25.670814	-103.348159

1 CARR: Cd. Acuña - Presa de La Amistad

CLAVE: 05085

ruta: MEX-002



Km: 0.00 Tipo: 3 Sent: 1

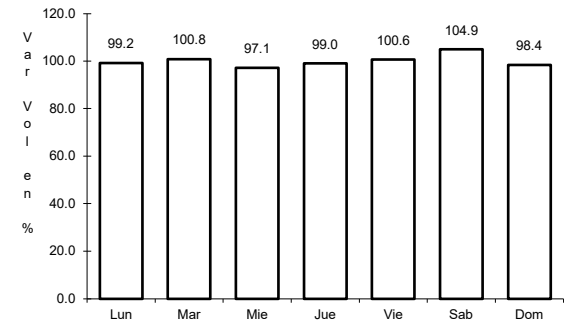
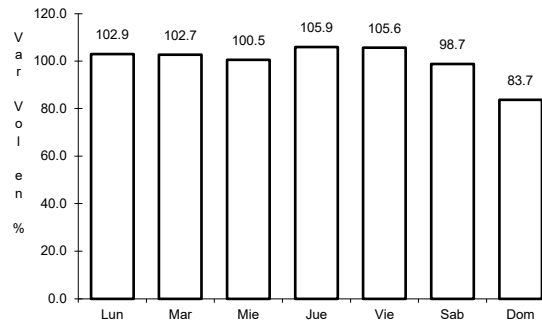
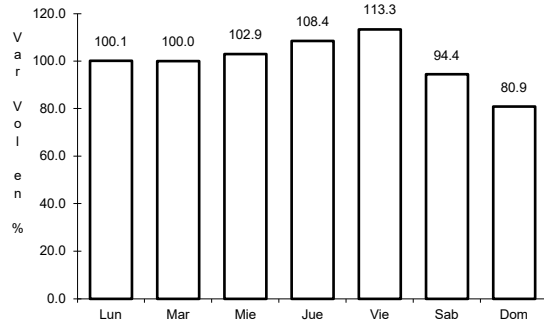
Km: 0.00 Tipo: 3 Sent: 2

Km: 23.00 Tipo: 1 Sent: 0

2 CARR: Durango - Torreón

CLAVE: 10085

ruta: MEX-040



Km: 0.00 Tipo: 3 Sent: 1

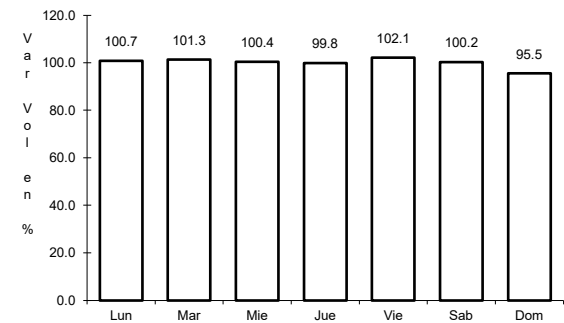
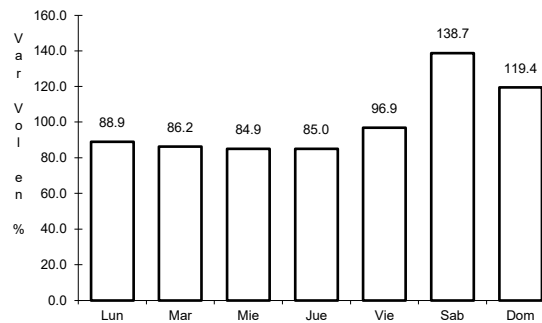
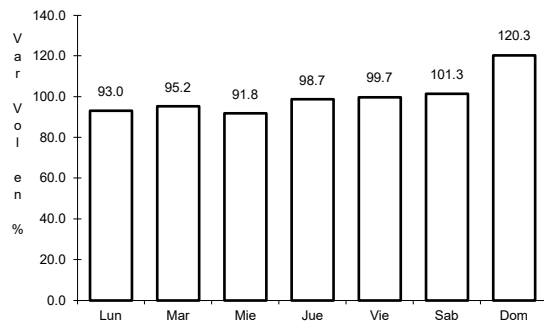
Km: 0.00 Tipo: 3 Sent: 2

Km: 120.90 Tipo: 1 Sent: 0

3 CARR: Ent. Bella Unión - Saltillo

CLAVE: 05003

ruta: MEX-057



Km: 4.61 Tipo: 1 Sent: 1

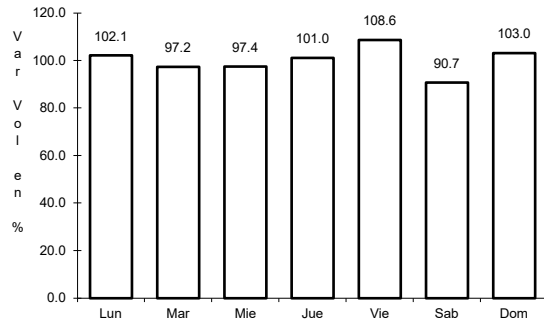
Km: 4.61 Tipo: 1 Sent: 2

Km: 17.00 Tipo: 1 Sent: 1

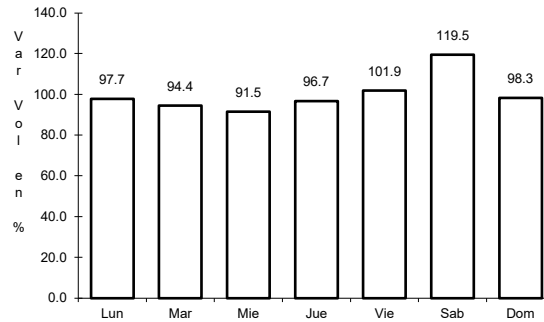
4 CARR: Ent. La Cuchilla - San Pedro de las Colonias

CLAVE: 05021

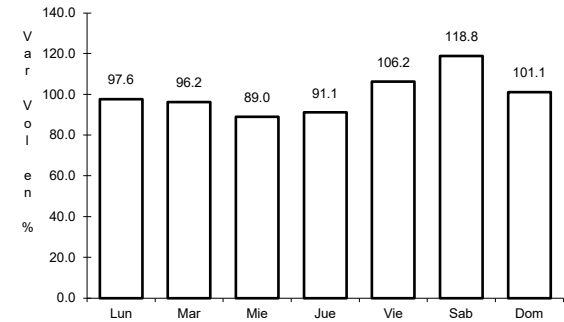
ruta: MEX-040



Km: 0.00 Tipo: 3 Sent: 0



Km: 18.70 Tipo: 1 Sent: 1

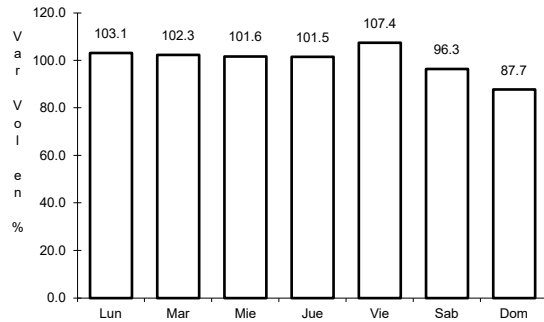


Km: 18.70 Tipo: 1 Sent: 2

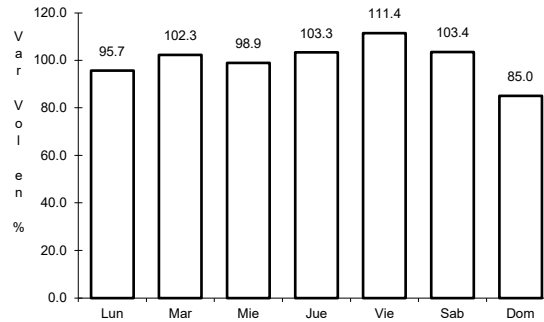
5 CARR: Ent. Morelos - Saltillo

CLAVE: 00149

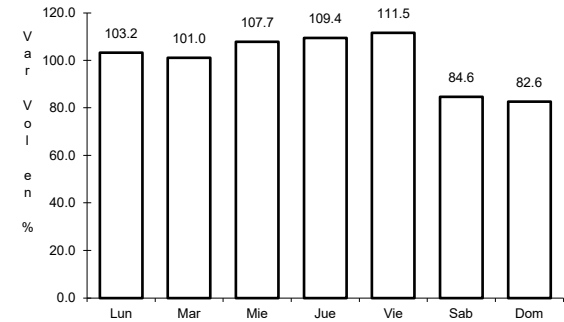
ruta: MEX-054



Km: 0.00 Tipo: 3 Sent: 1



Km: 0.00 Tipo: 3 Sent: 2

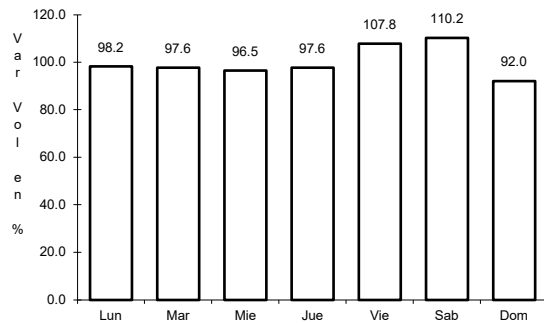


Km: 333.00 Tipo: 3 Sent: 1

6 CARR: Gregorio García - Francisco I. Madero

CLAVE: 00110

ruta: MEX-040

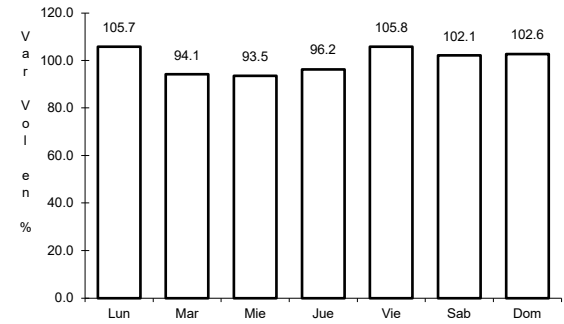
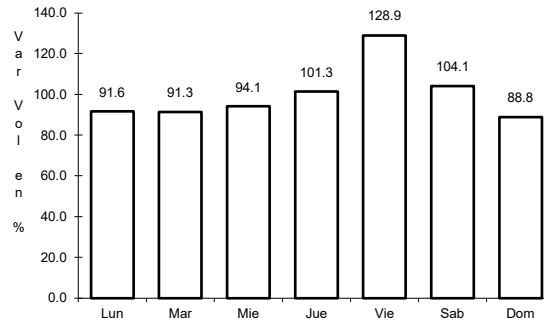
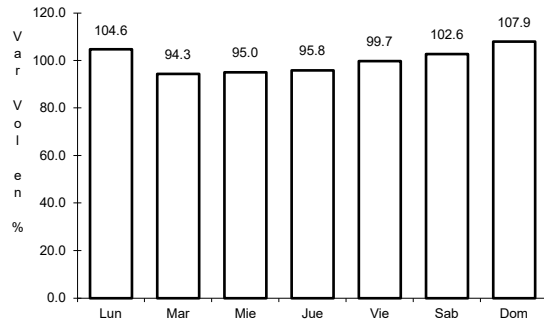


Km: 9.60 Tipo: 1 Sent: 0

7 CARR: Libramiento Allende - Nava

CLAVE: 05518

ruta: MEX-057



Km: 0.00 Tipo: 3 Sent: 1

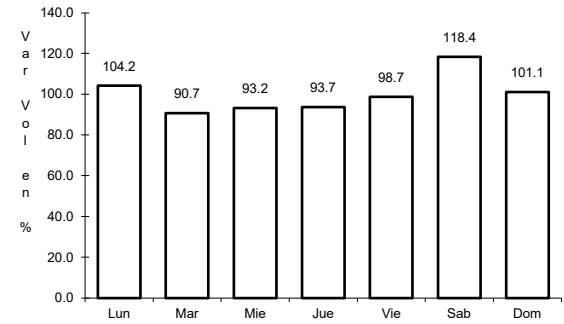
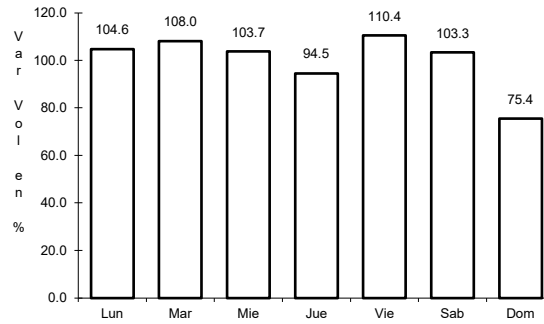
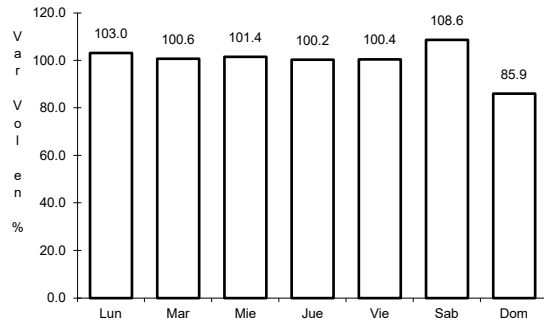
Km: 0.00 Tipo: 3 Sent: 2

Km: 18.55 Tipo: 1 Sent: 1

8 CARR: Monclova - Piedras Negras

CLAVE: 05407

ruta: MEX-057



Km: 0.00 Tipo: 3 Sent: 1

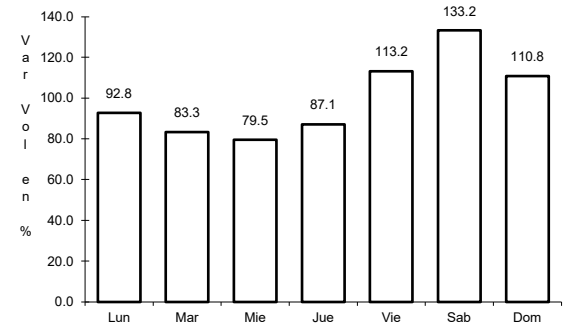
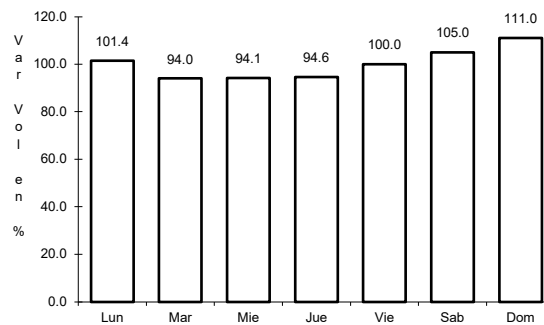
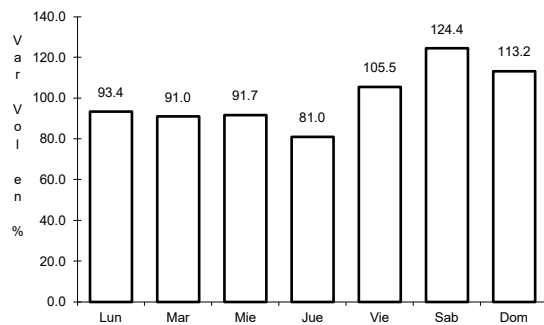
Km: 0.00 Tipo: 3 Sent: 2

Km: 182.00 Tipo: 1 Sent: 0

9 CARR: Monclova - San Pedro de Las Colonias

CLAVE: 05062

ruta: MEX-030



Km: 2.00 Tipo: 3 Sent: 1

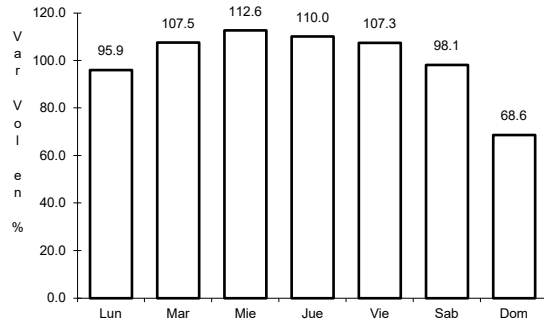
Km: 2.00 Tipo: 3 Sent: 2

Km: 80.15 Tipo: 3 Sent: 0

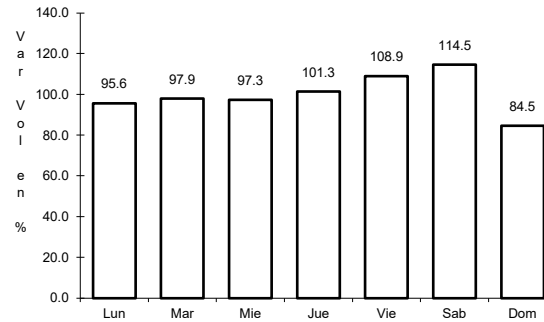
10 CARR: Monterrey - Castaños

CLAVE: 00128

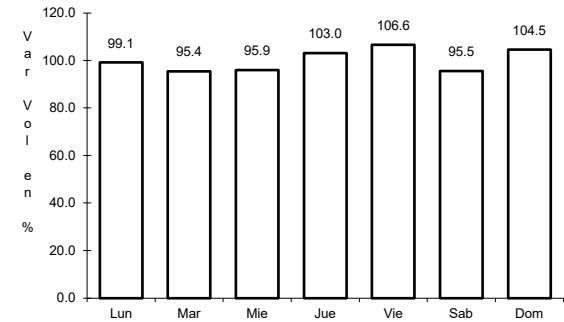
ruta: MEX-053



Km: 0.00 Tipo: 3 Sent: 0



Km: 155.90 Tipo: 1 Sent: 1

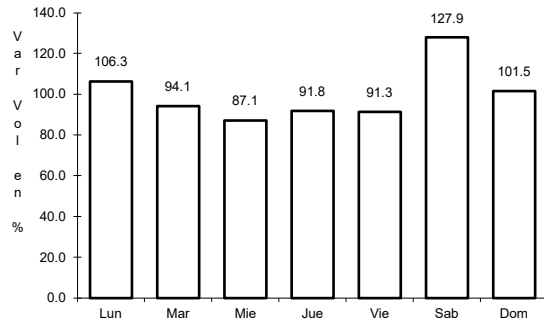


Km: 155.90 Tipo: 1 Sent: 2

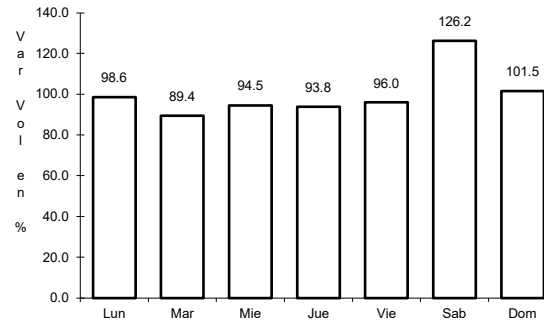
11 CARR: Morelos - Cd. Acuña

CLAVE: 05029

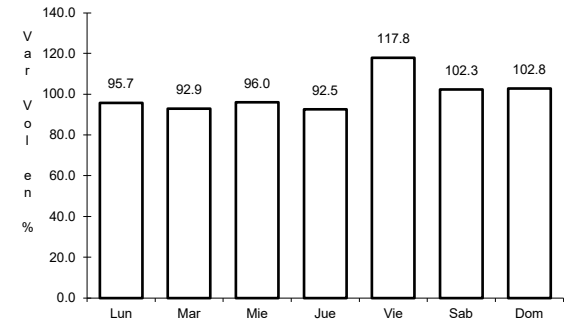
ruta: MEX-029



Km: 0.00 Tipo: 3 Sent: 1



Km: 0.00 Tipo: 3 Sent: 2

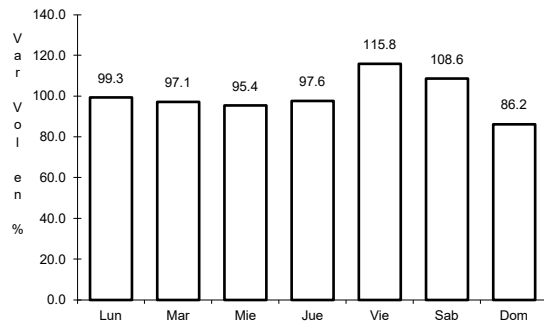


Km: 73.84 Tipo: 1 Sent: 0

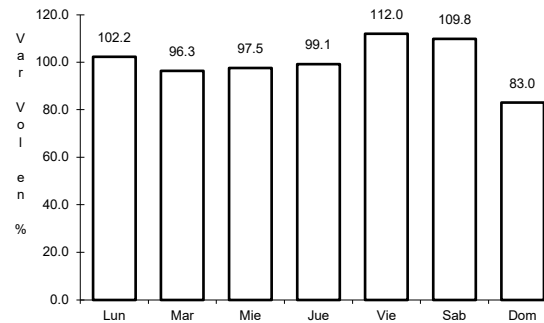
12 CARR: Nueva Rosita - Boquillas del Carmen

CLAVE: 05028

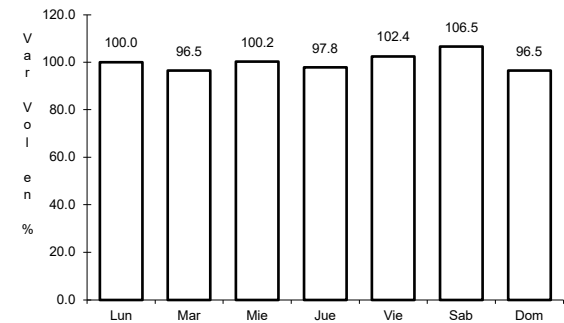
ruta: MEX-053



Km: 0.00 Tipo: 3 Sent: 1



Km: 0.00 Tipo: 3 Sent: 2

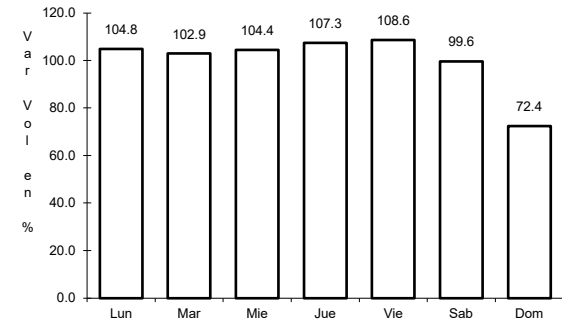
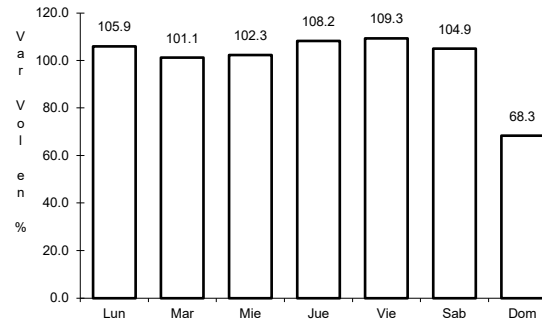
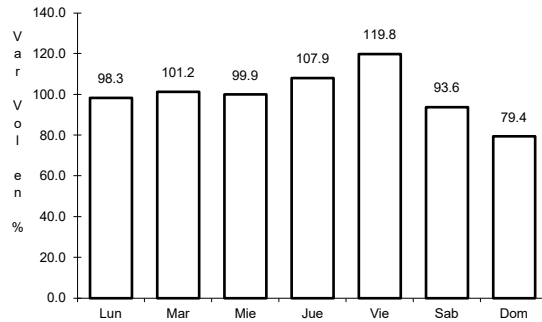


Km: 35.00 Tipo: 3 Sent: 0

13 CARR: Nuevo Laredo - Piedras Negras

CLAVE: 00503

ruta: MEX-002



Km: 36.18 Tipo: 1 Sent: 0

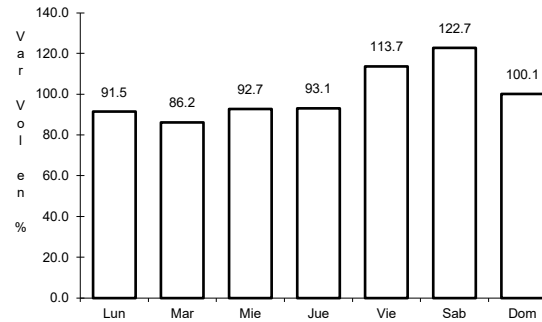
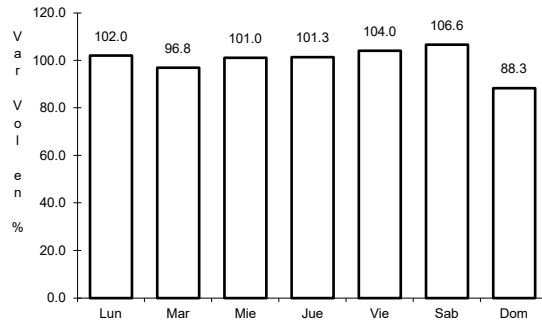
Km: 169.30 Tipo: 1 Sent: 1

Km: 169.30 Tipo: 1 Sent: 2

14 CARR: Ojo Caliente - Santa Cruz

CLAVE: 05007

ruta: MEX-057



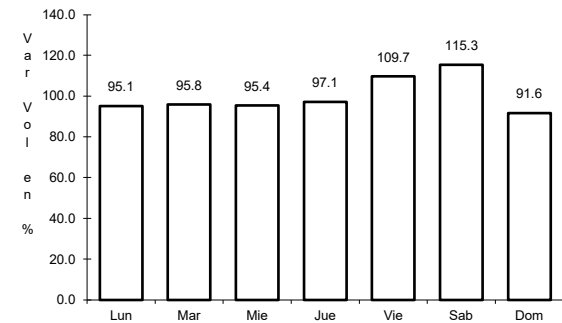
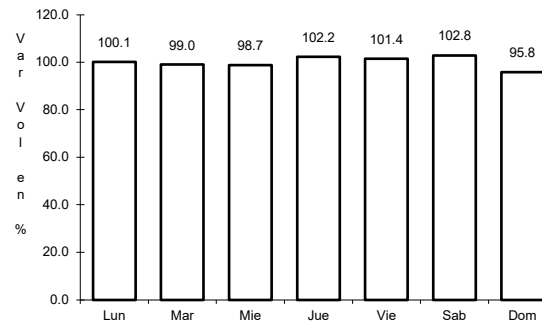
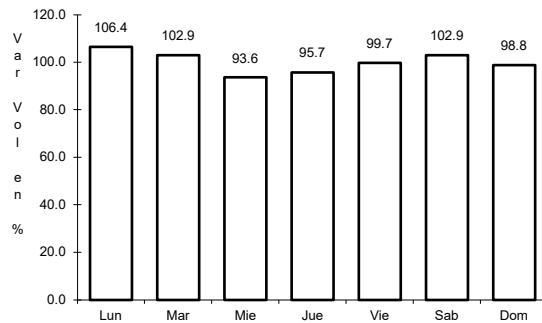
Km: 0.00 Tipo: 3 Sent: 0

Km: 34.00 Tipo: 1 Sent: 0

15 CARR: Piedras Negras - Cd. Acuña

CLAVE: 05061

ruta: MEX-002



Km: 0.00 Tipo: 3 Sent: 1

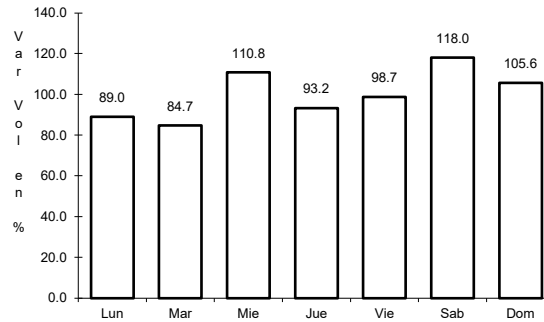
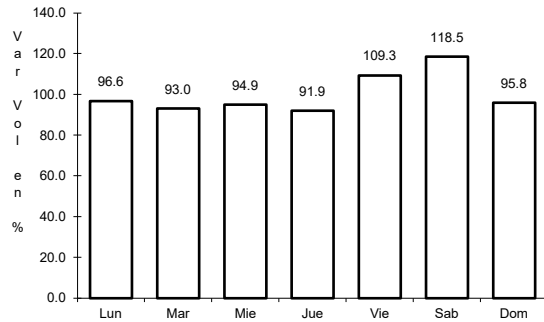
Km: 0.00 Tipo: 3 Sent: 2

Km: 83.30 Tipo: 1 Sent: 0

16 CARR: Puerto México - La Encantada

CLAVE: 05002

RUTA: MEX-057



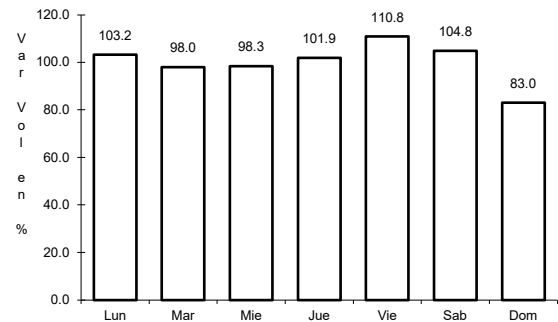
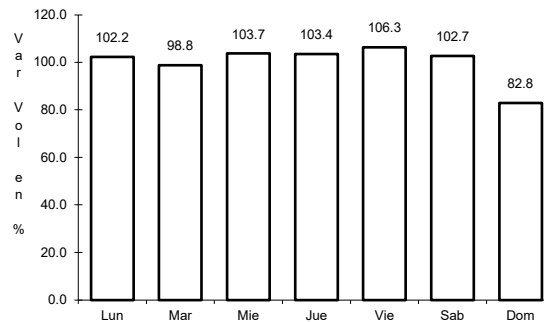
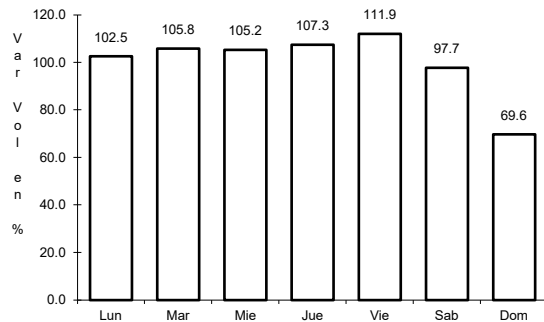
Km: 213.00 Tipo: 3 Sent: 0

Km: 243.00 Tipo: 1 Sent: 0

17 CARR: Saltillo - Monclova

CLAVE: 05406

RUTA: MEX-057



Km: 13.00 Tipo: 1 Sent: 0

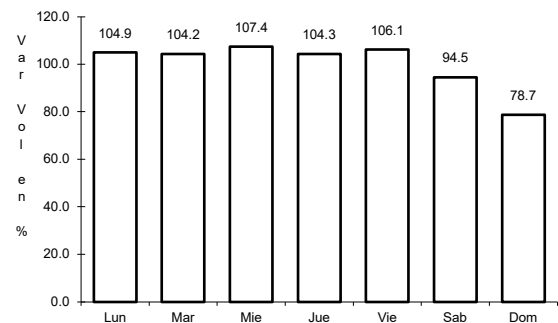
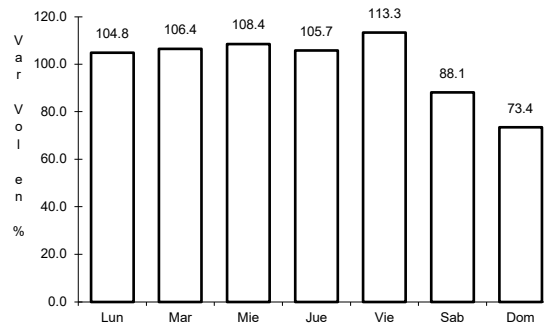
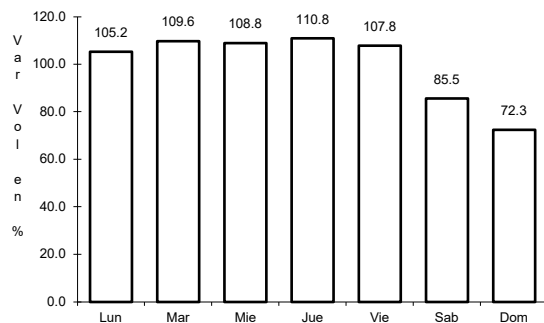
Km: 192.00 Tipo: 1 Sent: 1

Km: 192.00 Tipo: 1 Sent: 2

18 CARR: Saltillo - Monterrey

CLAVE: 00087

RUTA: MEX-040



Km: 4.25 Tipo: 3 Sent: 1

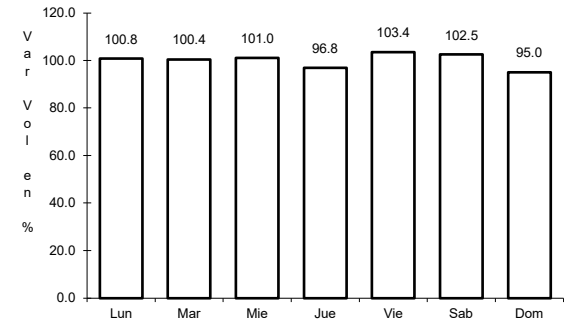
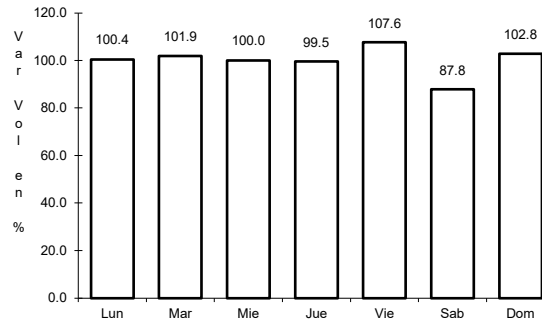
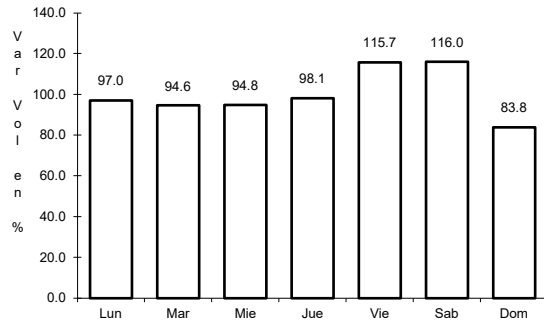
Km: 4.25 Tipo: 3 Sent: 2

Km: 79.20 Tipo: 1 Sent: 1

19 CARR: Saltillo - Torreón

CLAVE: 05086

ruta: MEX-040



Km: 6.10 Tipo: 3 Sent: 1

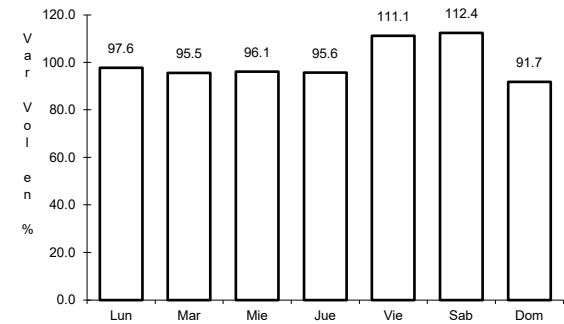
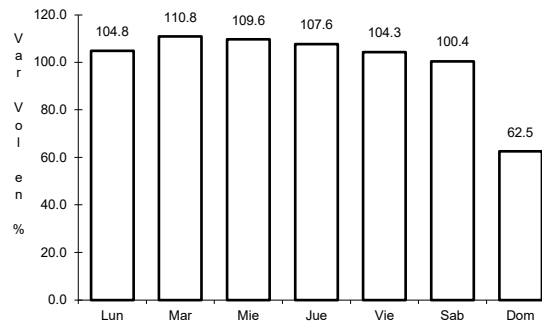
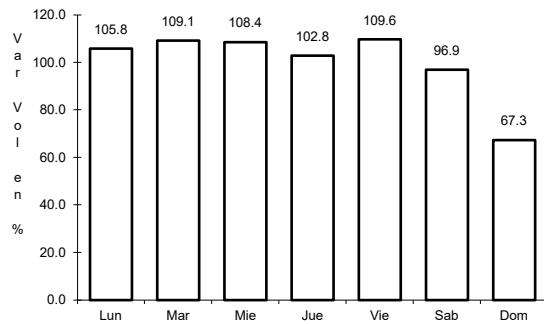
Km: 6.10 Tipo: 3 Sent: 2

Km: 91.20 Tipo: 1 Sent: 0

20 CARR: Torreón - San Pedro de las Colonias

CLAVE: 05021

ruta: COA-MEX-030



Km: 0.00 Tipo: 3 Sent: 1

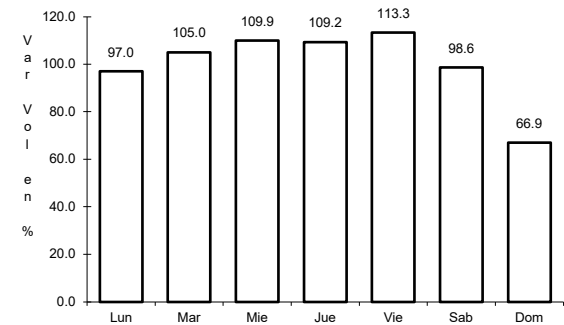
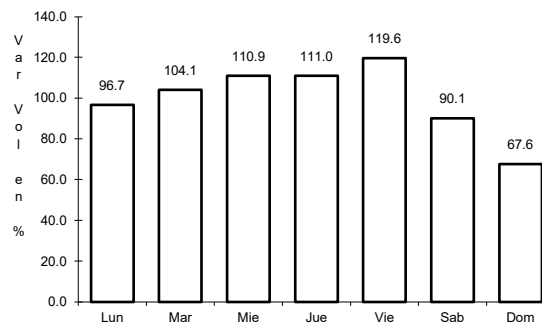
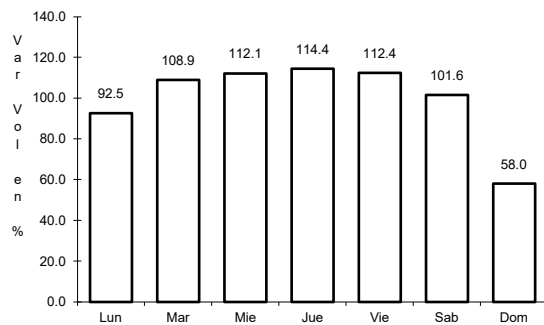
Km: 0.00 Tipo: 3 Sent: 2

Km: 55.00 Tipo: 1 Sent: 1

21 CARR: Libramiento Norponiente de Saltillo (Cuota)

CLAVE: 05022

ruta: MEX-054D



Km: 0.00 Tipo: 3 Sent: 0

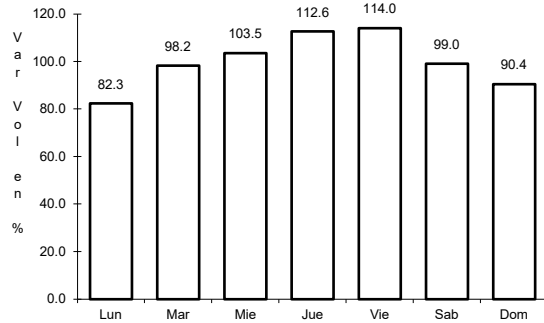
Km: 22.44 Tipo: 3 Sent: 0

Km: 46.21 Tipo: 1 Sent: 0

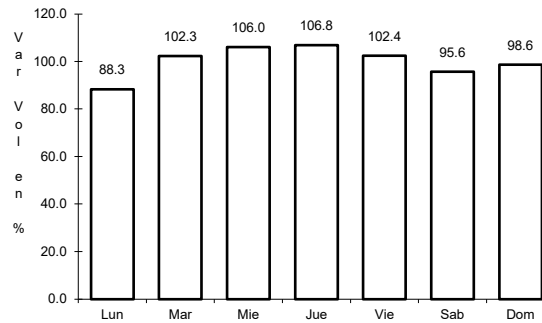
22 CARR: Libramiento Norte de Torreón (Cuota)

CLAVE:

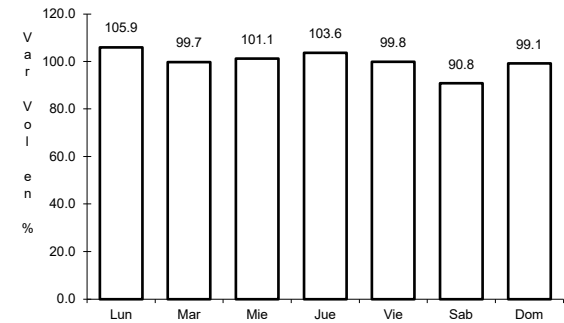
ruta: MEX-040D



Km: 0.00 Tipo: 3 Sent: 0



Km: 17.36 Tipo: 1 Sent: 0

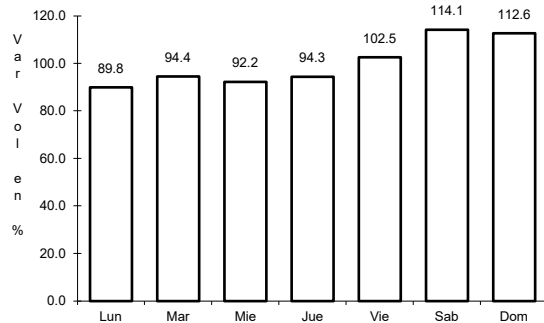


Km: 40.70 Tipo: 1 Sent: 0

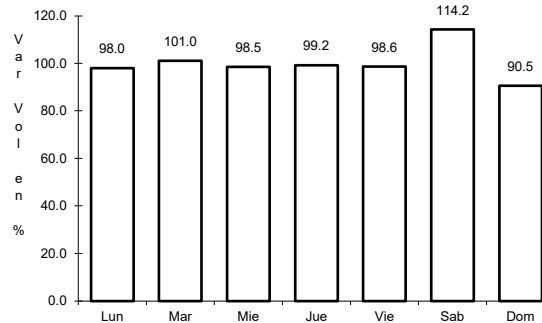
23 CARR: Libramiento Oriente de Saltillo (Cuota)

CLAVE: 00115

ruta: MEX-057D



Km: 12.30 Tipo: 3 Sent: 1

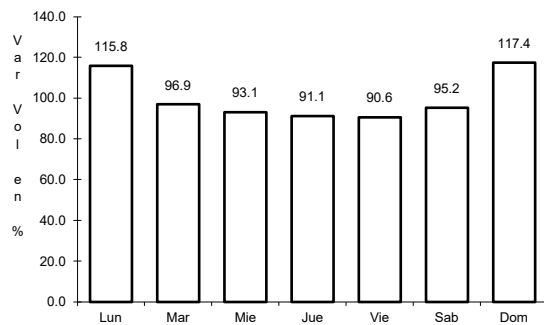


Km: 12.30 Tipo: 3 Sent: 2

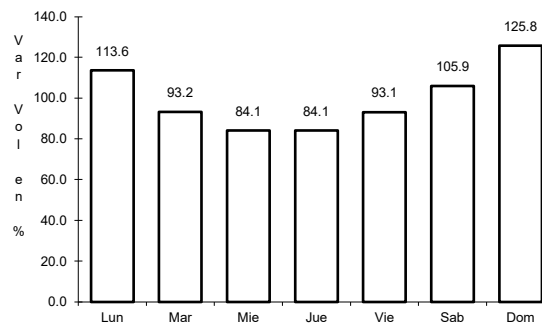
24 CARR: Nueva Rosita - Ent. Allende (Cuota)

CLAVE: 05502

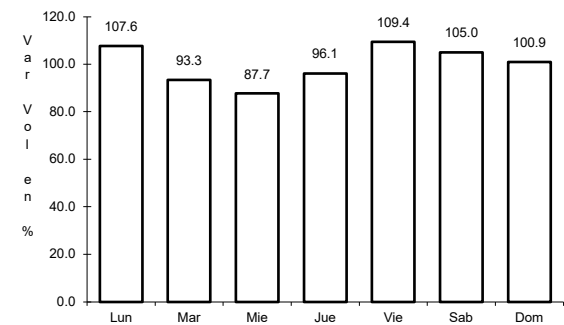
ruta: MEX-057D



Km: 0.00 Tipo: 3 Sent: 1



Km: 0.00 Tipo: 3 Sent: 2

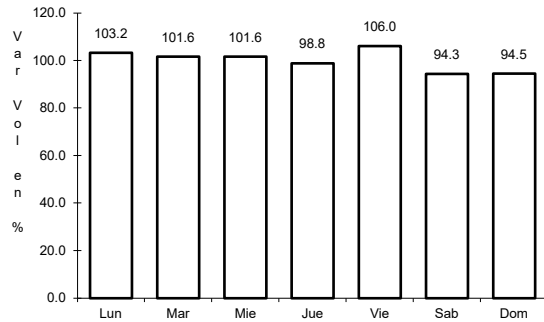


Km: 54.00 Tipo: 1 Sent: 1

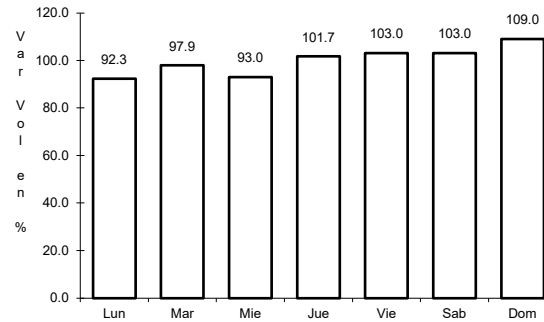
25 CARR: Puerto México - La Carbonera (Cuota)

CLAVE: 00115

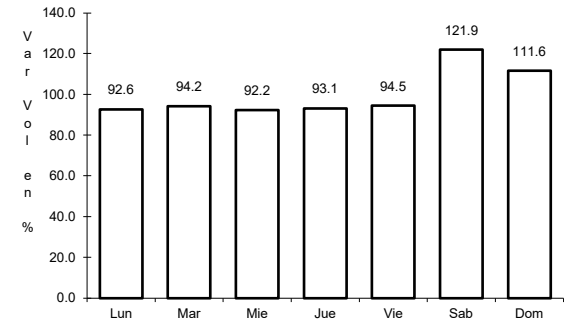
ruta: MEX-057D



Km: 224.94 Tipo: 1 Sent: 1



Km: 224.94 Tipo: 1 Sent: 2

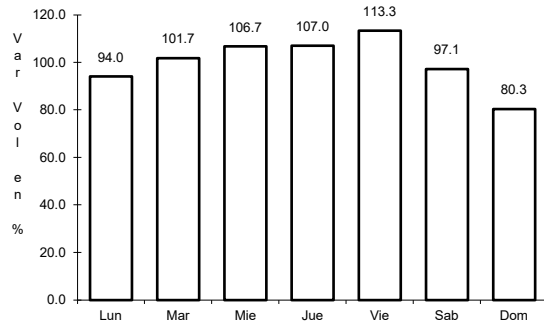


Km: 228.30 Tipo: 3 Sent: 1

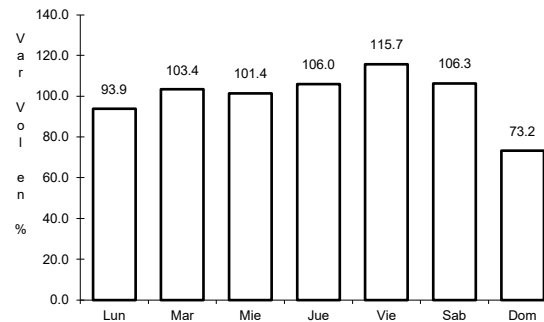
26 CARR: Saltillo - Monterrey (Cuota)

CLAVE: 00087

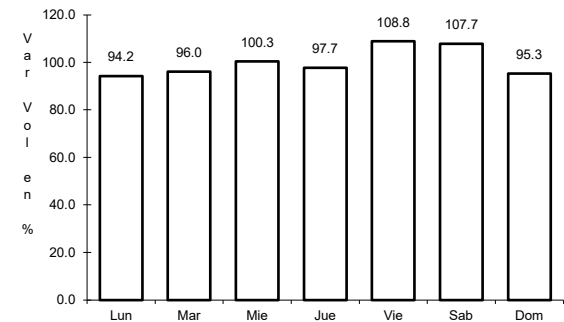
ruta: MEX-040D



Km: 46.21 Tipo: 3 Sent: 1



Km: 46.21 Tipo: 3 Sent: 2

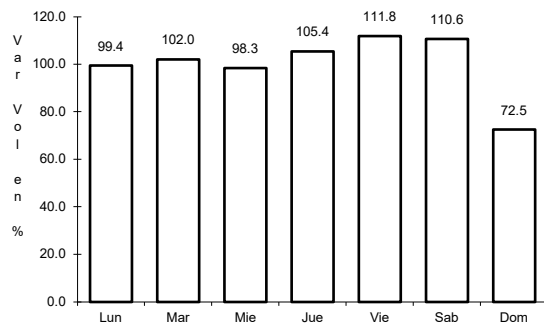


Km: 82.00 Tipo: 3 Sent: 1

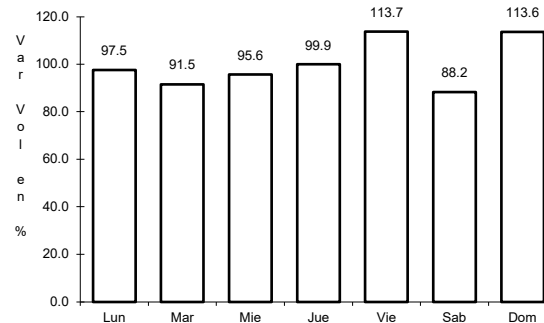
27 CARR: Saltillo - Torreón (Cuota) T1

CLAVE:

ruta: MEX-040D



Km: 76.50 Tipo: 1 Sent: 1

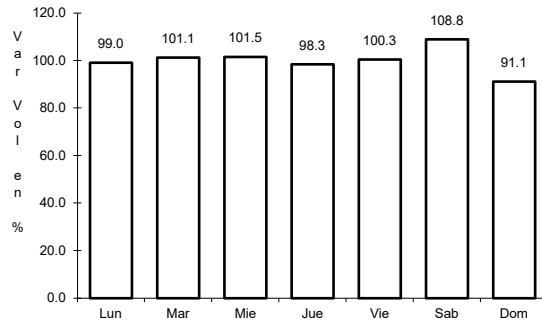


Km: 76.50 Tipo: 1 Sent: 2

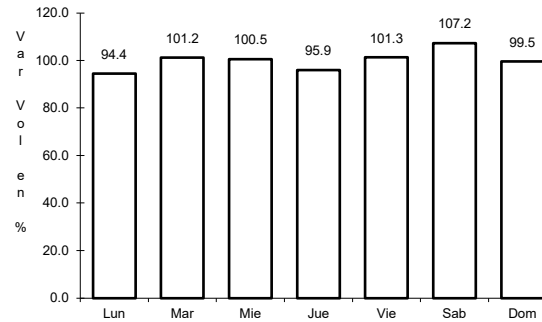
28 CARR: Saltillo - Torreón (Cuota) T2

CLAVE:

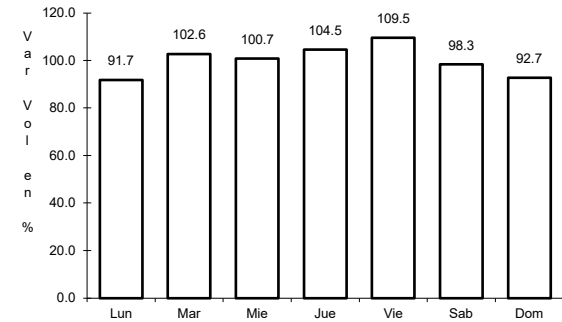
ruta: MEX-040D



Km: 1.10 Tipo: 3 Sent: 1



Km: 1.10 Tipo: 3 Sent: 2

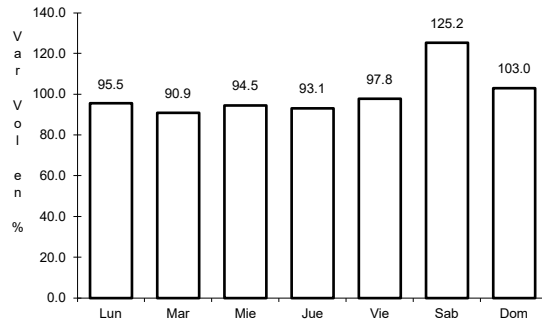


Km: 37.00 Tipo: 1 Sent: 1

29 CARR: Allende - Villa Unión

CLAVE: 05001

ruta: COA-015

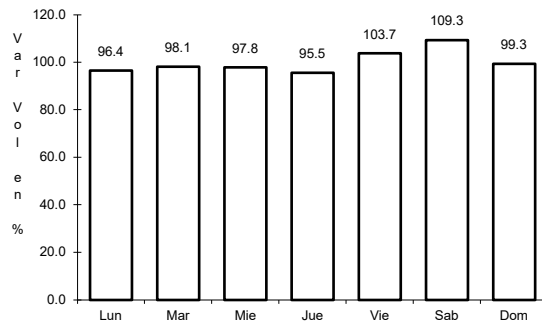


Km: 0.00 Tipo: 3 Sent: 0

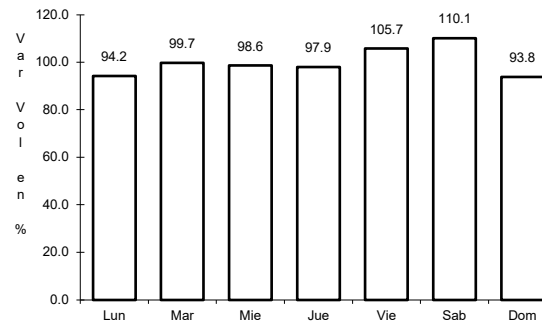
30 CARR: Corredor Libramiento de San Pedro

CLAVE: 05023

ruta: COA-087



Km: 0.00 Tipo: 3 Sent: 0

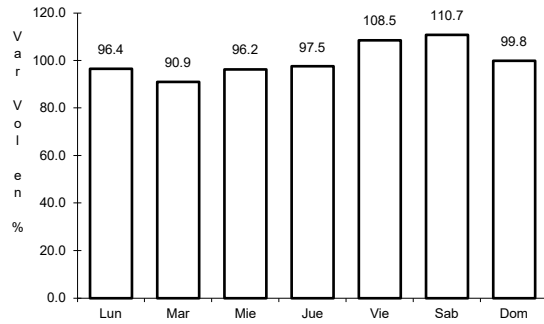


Km: 3.60 Tipo: 1 Sent: 0

31 CARR: Cuatro Ciénegas - Ocampo

CLAVE: 05026

RUTA: COA-048



Km: 0.00

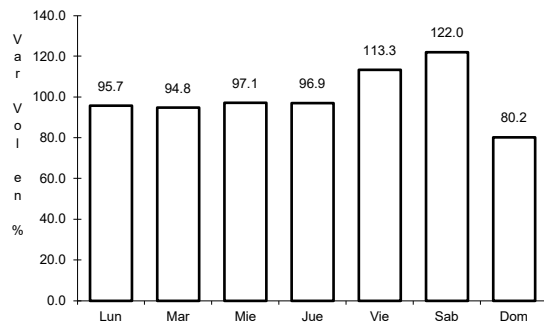
Tipo: 3

Sent: 0

32 CARR: El Sauz - Palau

CLAVE: 05060

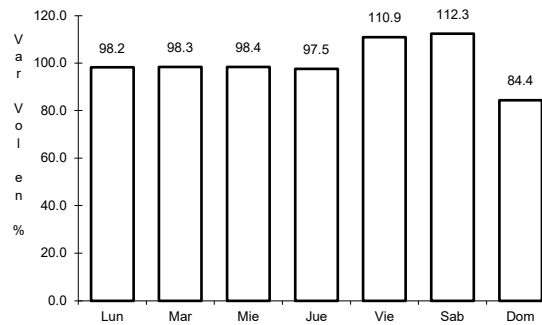
RUTA: COA-022



Km: 0.00

Tipo: 3

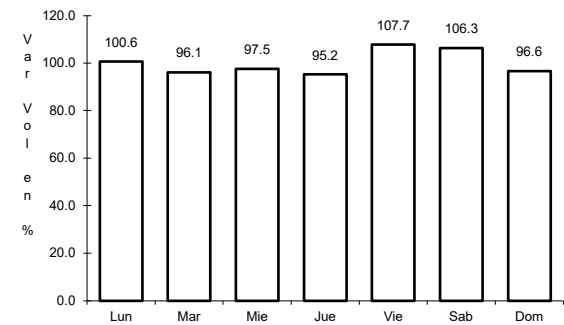
Sent: 1



Km: 0.00

Tipo: 3

Sent: 2



Km: 42.50

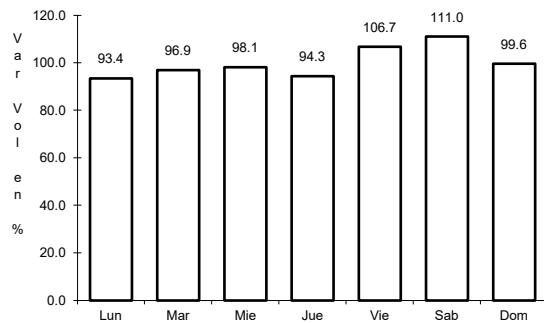
Tipo: 1

Sent: 1

33 CARR: Emiliano Zapata - Viesca

CLAVE: 05521

RUTA: COA-082



Km: 0.00

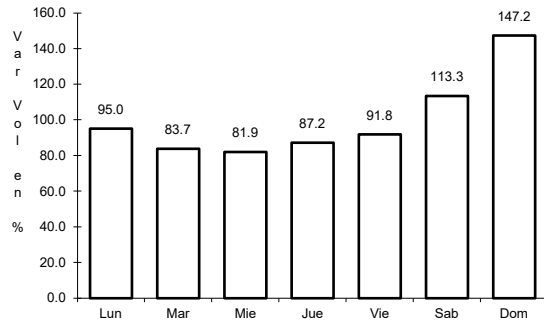
Tipo: 3

Sent: 0

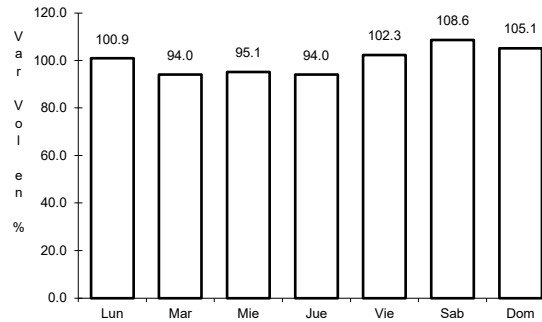
34 CARR: Ent. La Rosa - General Cepeda

CLAVE: 05034

ruta: COA-034



Km: 0.00 Tipo: 3 Sent: 0

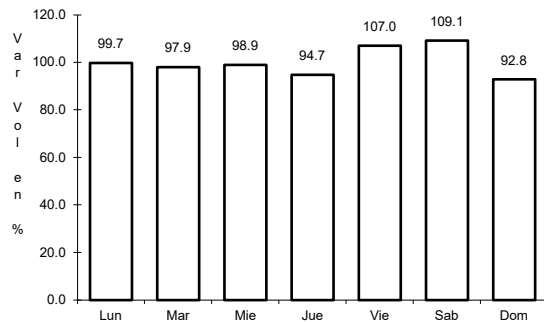


Km: 21.00 Tipo: 1 Sent: 0

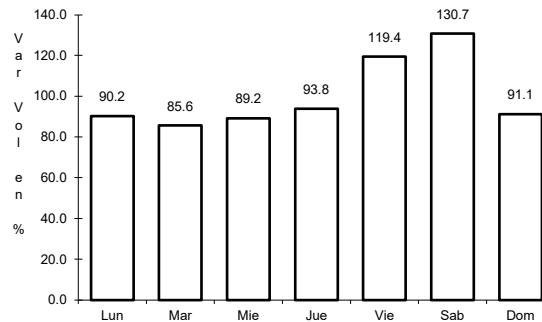
35 CARR: Ent. Paila - Parras de La Fuente

CLAVE: 05014

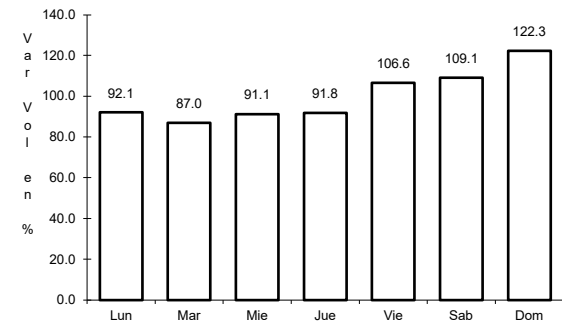
ruta: COA-102



Km: 0.00 Tipo: 3 Sent: 0



Km: 20.05 Tipo: 1 Sent: 1

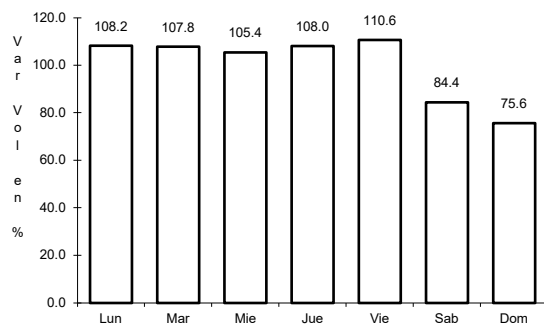


Km: 20.05 Tipo: 1 Sent: 2

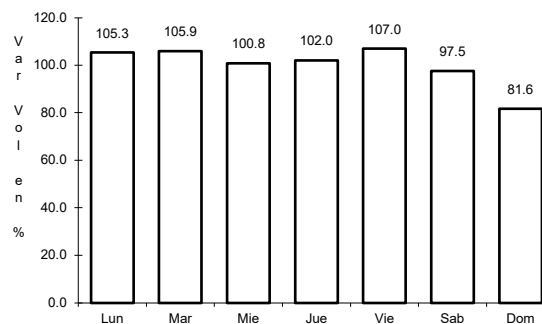
36 CARR: Libramiento de Matamoros

CLAVE: 05032

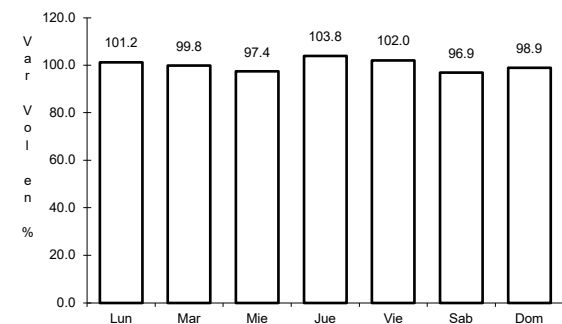
ruta: COA



Km: 0.00 Tipo: 3 Sent: 0



Km: 5.32 Tipo: 1 Sent: 1

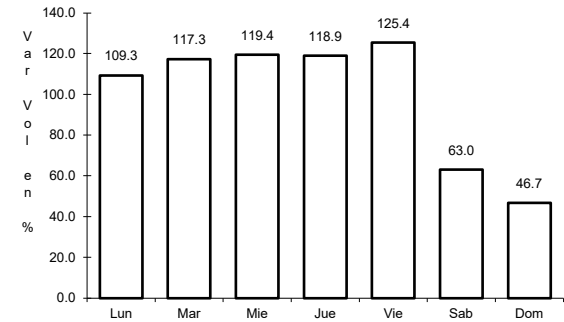
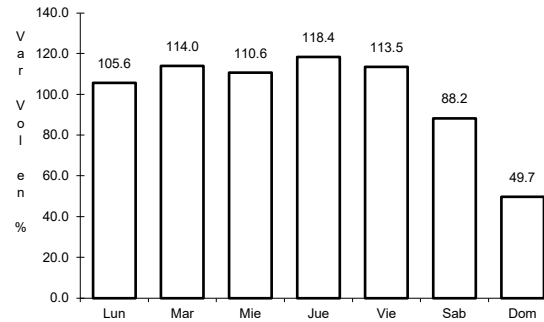
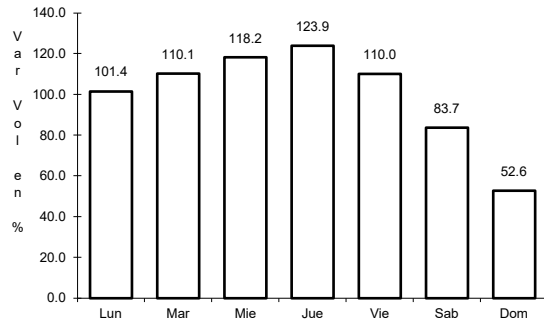


Km: 5.32 Tipo: 1 Sent: 2

37 CARR: Libramiento de Saltillo J.L.P.

CLAVE: 05031

RUTA: COA



Km: 2.50 Tipo: 3 Sent: 1

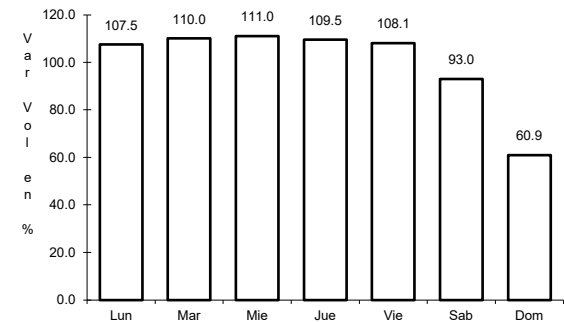
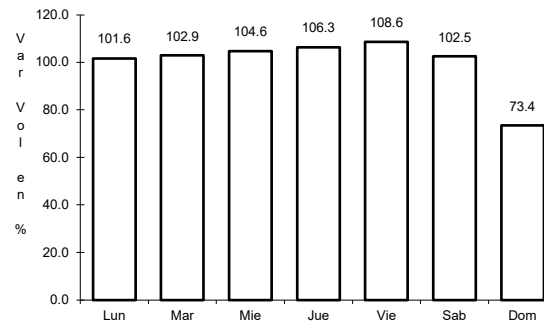
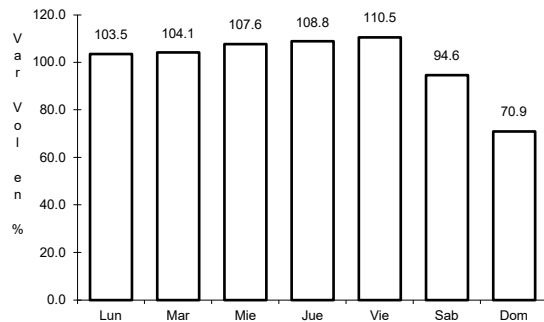
Km: 2.50 Tipo: 3 Sent: 2

Km: 18.00 Tipo: 1 Sent: 1

38 CARR: Libramiento de Torreón-Gómez Palacio-Lerdo

CLAVE: 05516

RUTA: COA-DGO-MEX-040-049



Km: 0.00 Tipo: 3 Sent: 1

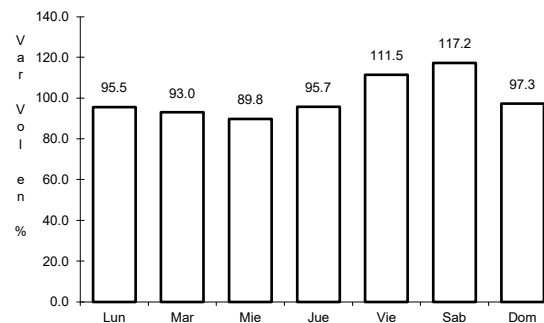
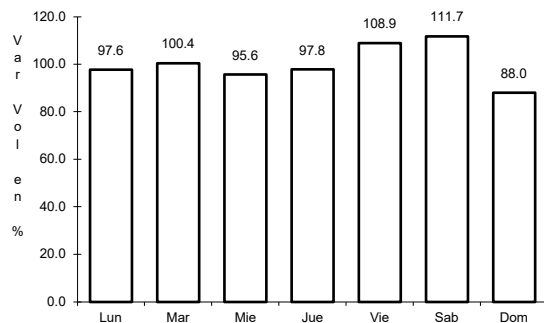
Km: 0.00 Tipo: 3 Sent: 2

Km: 7.30 Tipo: 1 Sent: 1

39 CARR: Matamoros - El Fresno

CLAVE: 05023

RUTA: COA-078



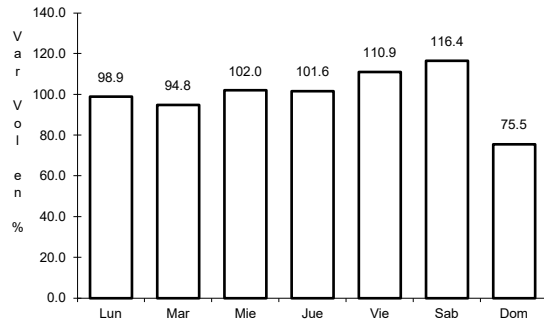
Km: 0.00 Tipo: 3 Sent: 0

Km: 12.60 Tipo: 1 Sent: 0

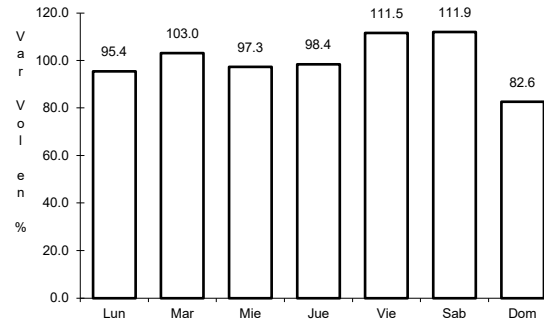
40 CARR: Matamoros - La Unión

CLAVE: 05023

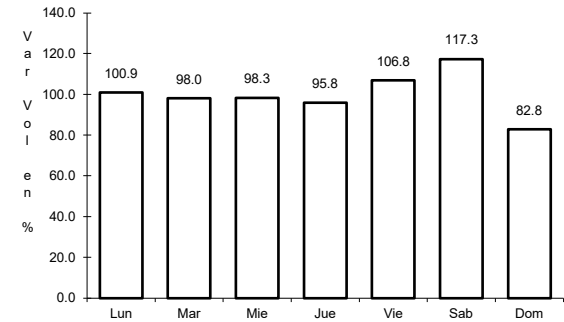
ruta: COA-070



Km: 1.00 Tipo: 3 Sent: 1



Km: 1.00 Tipo: 3 Sent: 2

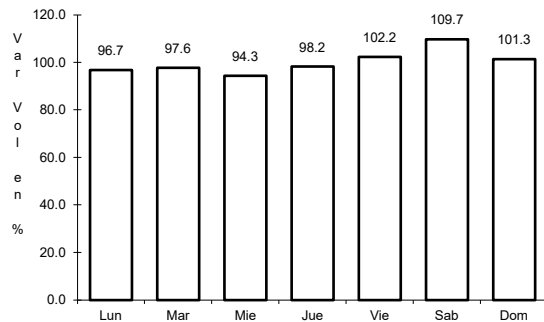


Km: 14.09 Tipo: 1 Sent: 0

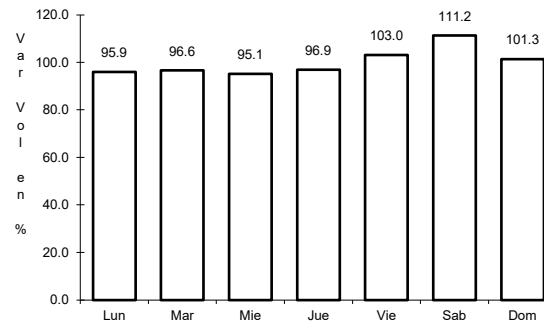
41 CARR: Monclova - Estación Candela

CLAVE: 00501

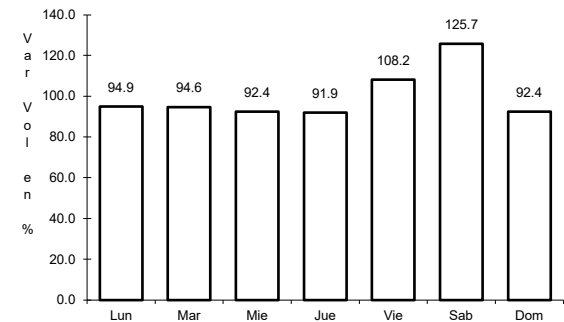
ruta: COA-030-NL



Km: 5.10 Tipo: 1 Sent: 1



Km: 5.10 Tipo: 1 Sent: 2

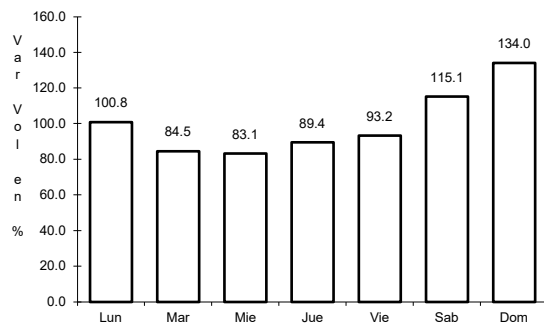


Km: 125.50 Tipo: 1 Sent: 0

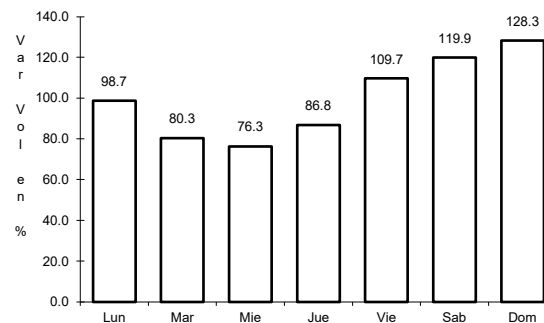
42 CARR: Morelos - Ent. Las Corrientes

CLAVE: 05500

ruta: COA-010



Km: 0.00 Tipo: 3 Sent: 0

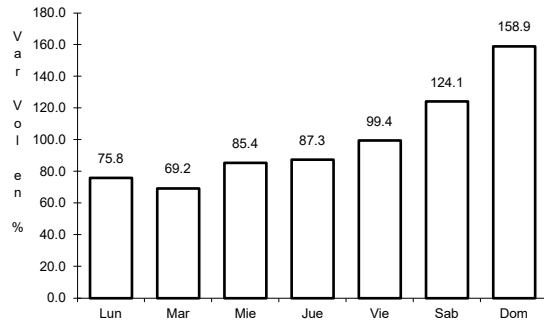


Km: 9.20 Tipo: 1 Sent: 0

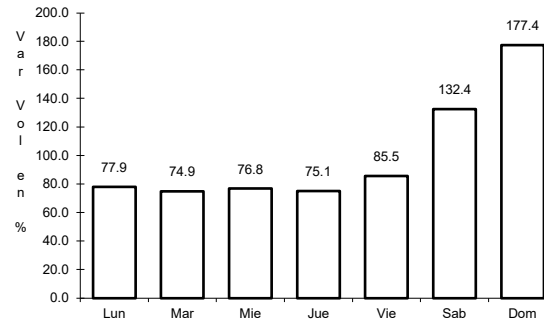
43 CARR: Puerto de Flores - El Hondable

CLAVE: 05512

RUTA: COA-112



Km: 0.00 Tipo: 3 Sent: 0

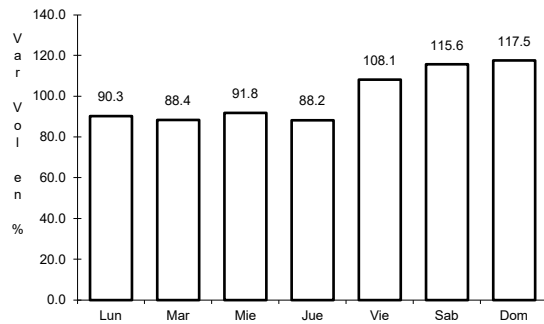


Km: 24.00 Tipo: 1 Sent: 0

44 CARR: Ramal a Hipólito

CLAVE: 05509

RUTA: COA-114

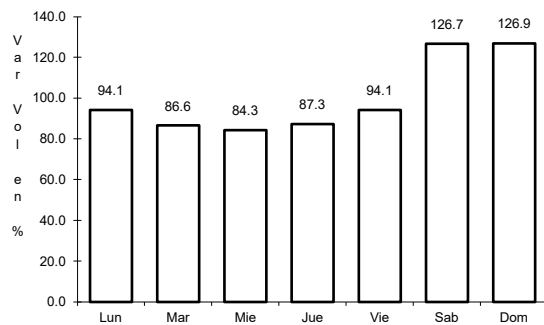


Km: 0.00 Tipo: 3 Sent: 0

45 CARR: Ramal a Lamadrid

CLAVE: 05522

RUTA: COA-042

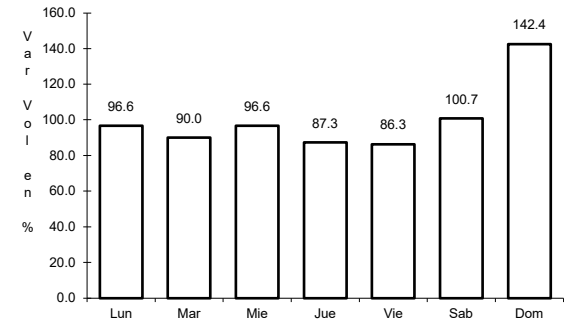
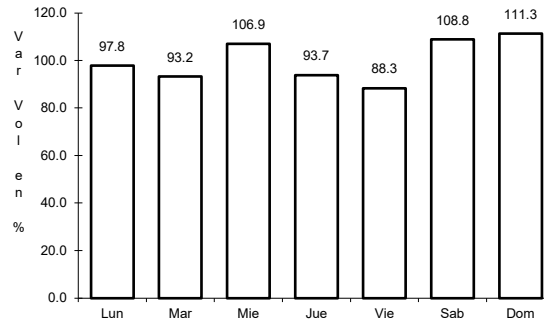
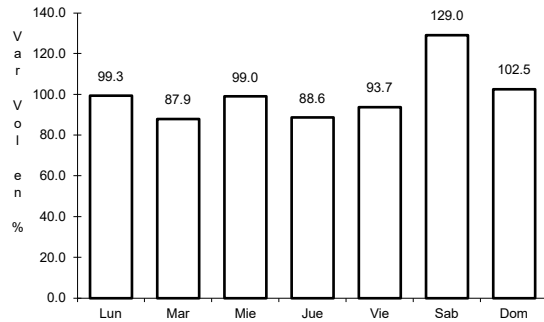


Km: 0.00 Tipo: 3 Sent: 0

46 CARR: Sabinas - Don Martín

CLAVE: 05501

ruta: COA-025



Km: 0.00 Tipo: 3 Sent: 0

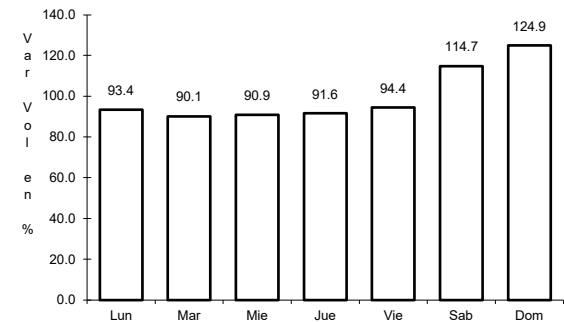
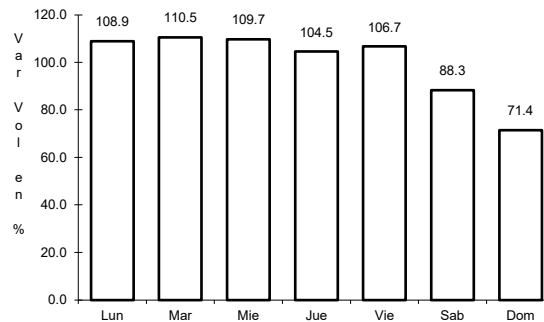
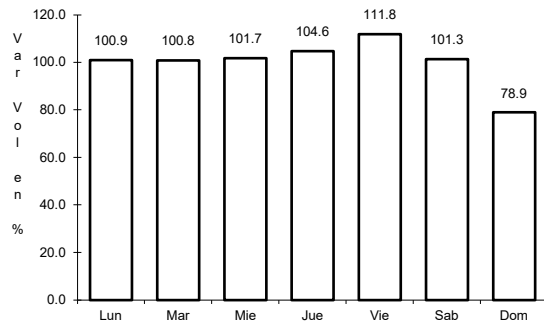
Km: 53.00 Tipo: 3 Sent: 0

Km: 66.00 Tipo: 1 Sent: 0

47 CARR: Saltillo - Arteaga

CLAVE: 05008

ruta: COA-106



Km: 0.00 Tipo: 3 Sent: 1

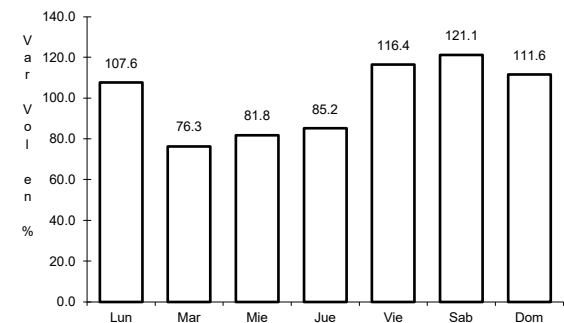
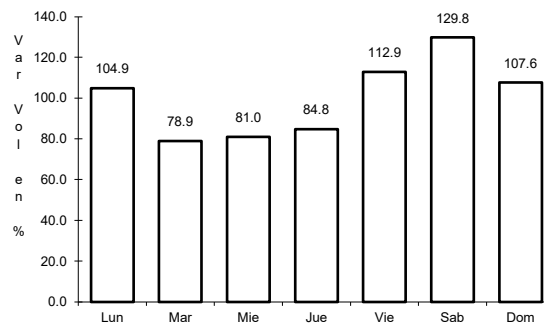
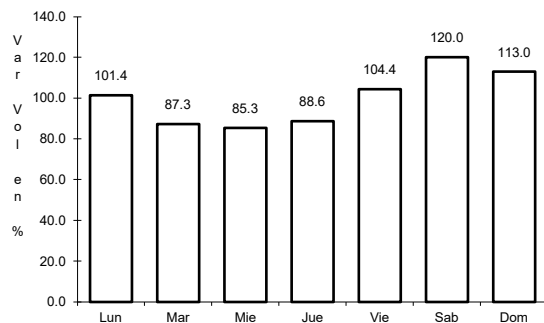
Km: 0.00 Tipo: 3 Sent: 2

Km: 12.00 Tipo: 1 Sent: 1

48 CARR: San Buenaventura - Estación Hermanas

CLAVE: 05004

ruta: COA-034



Km: 0.00 Tipo: 3 Sent: 0

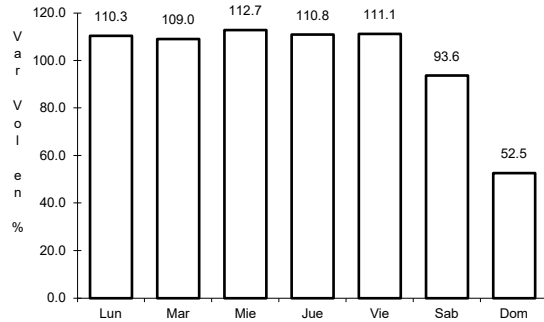
Km: 15.71 Tipo: 1 Sent: 0

Km: 50.00 Tipo: 1 Sent: 0

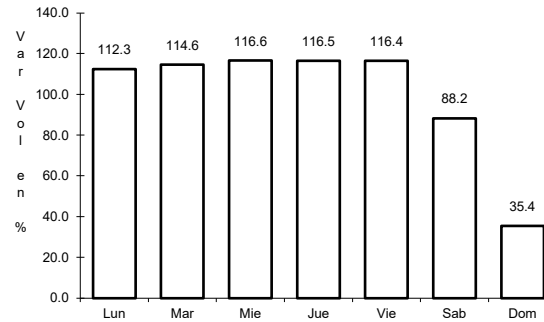
49 CARR: T. C. (Ent. Morelos - Saltillo) - Parras de La Fuente

CLAVE: 05510

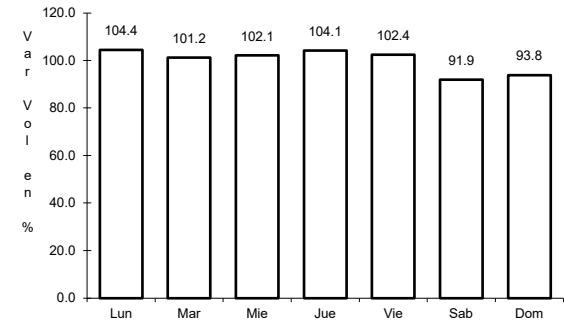
RUTA: COA-105



Km: 0.00 Tipo: 3 Sent: 1



Km: 0.00 Tipo: 3 Sent: 2

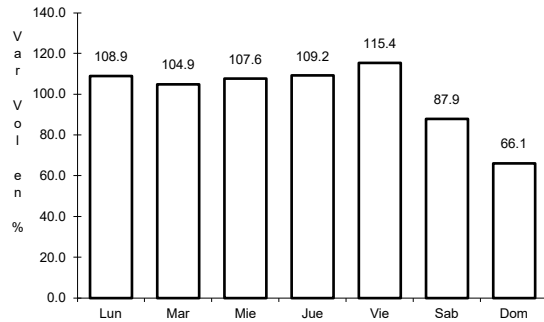


Km: 102.00 Tipo: 1 Sent: 0

50 CARR: T. C. (Saltillo - Monclova) - Ramos Arizpe

CLAVE: 05508

RUTA: COA

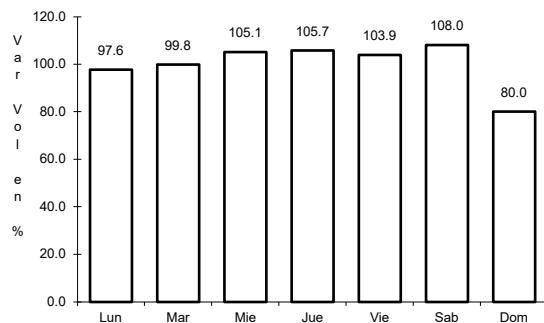


Km: 0.00 Tipo: 3 Sent: 0

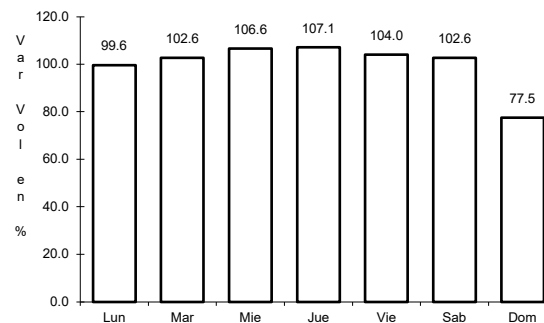
51 CARR: Torreón - Escuadrón 201

CLAVE: 05022

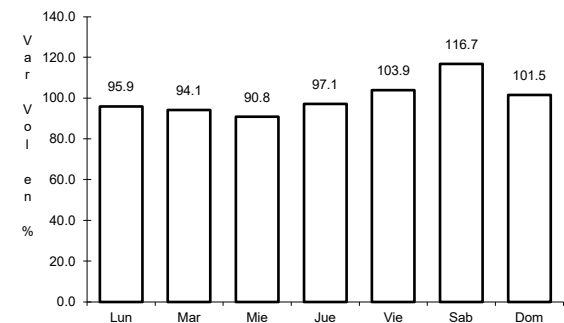
RUTA: COA-011



Km: 0.00 Tipo: 3 Sent: 1



Km: 0.00 Tipo: 3 Sent: 2



Km: 17.06 Tipo: 1 Sent: 0

